

TANCO AUTOWRAP SYSTEMS  
1000 MODEL 1992  
C/W LIFT ARM  
OPERATORS HANDBOOK  
AND  
PARTS LIST  
WD623 - M0392

1  
2  
3

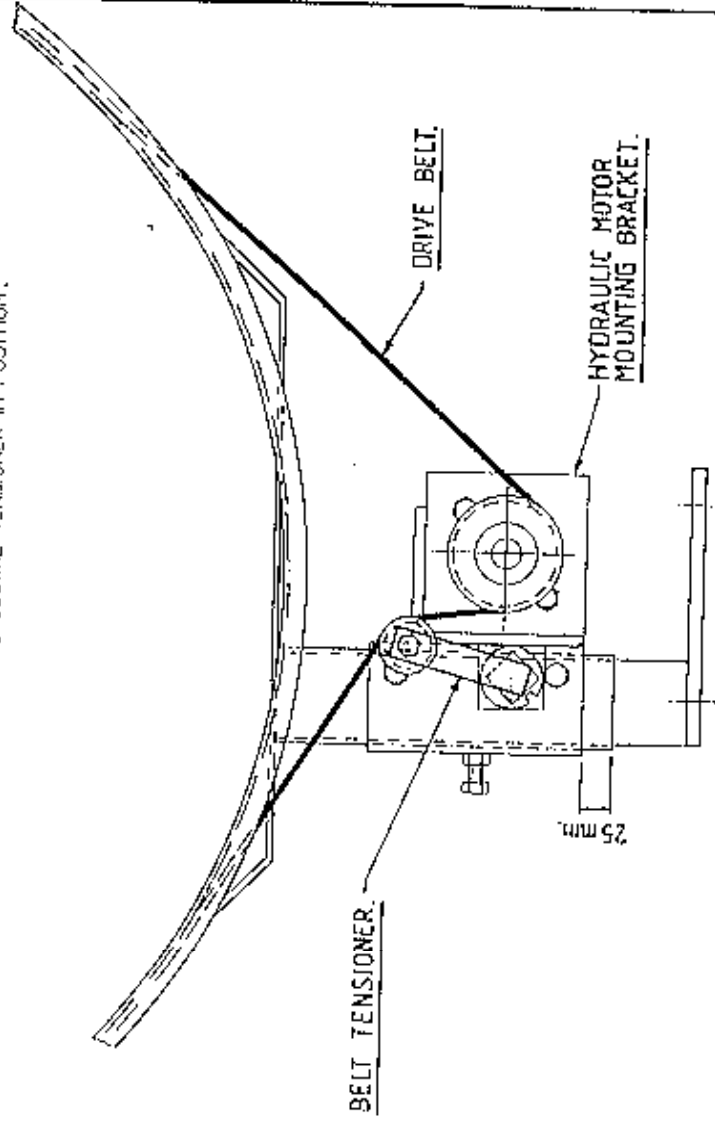
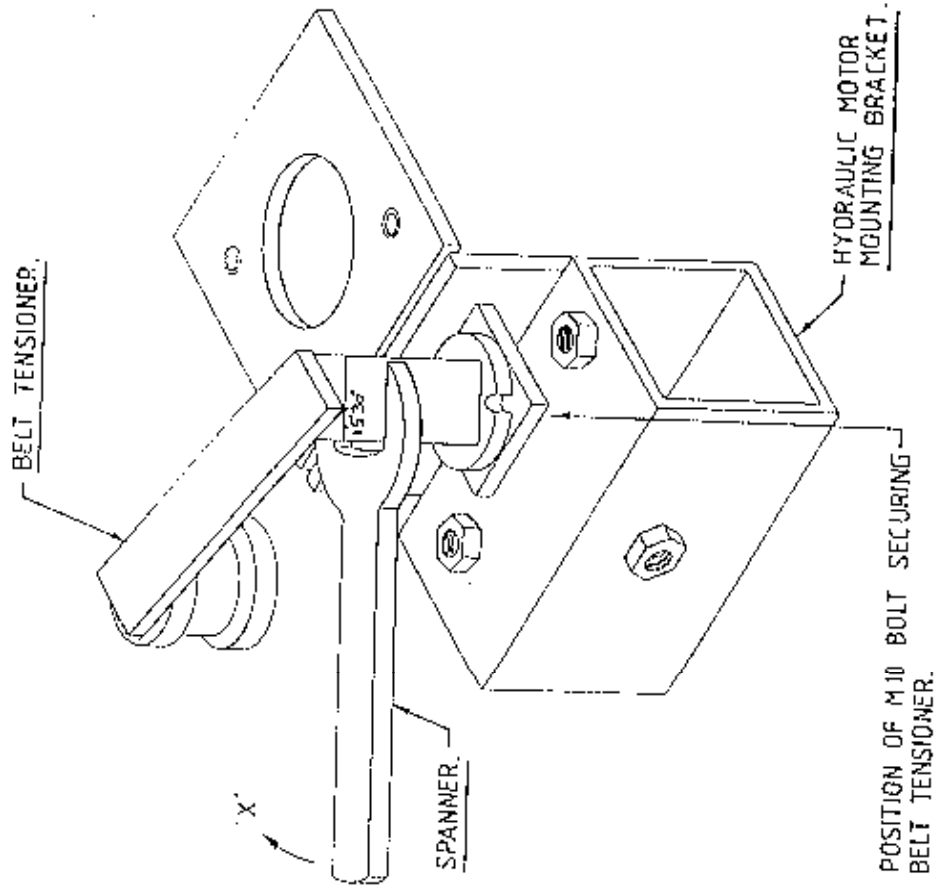
4

5

# TANCO AUTO/RAP 992. DRIVE BELT TENSIONING SYSTEM.

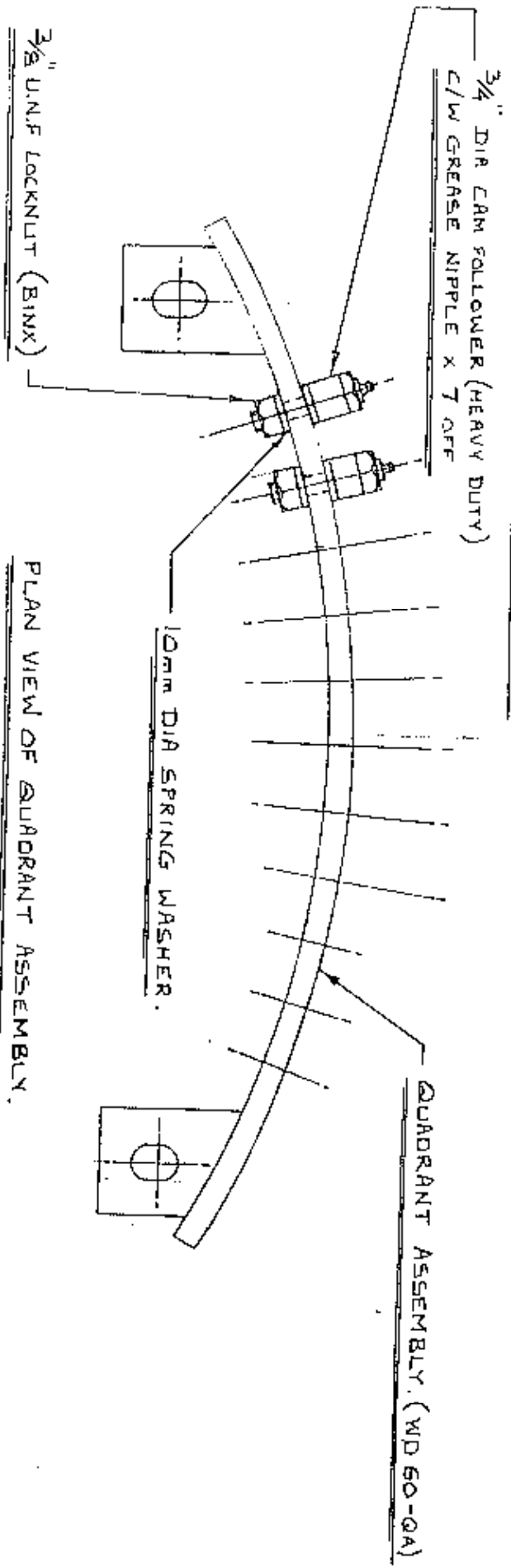
## BELT TENSIONING PROCEDURE

1. CHECK THAT HYDRAULIC MOTOR MOUNTING BRACKET IS SECURED IN POSITION USING 25mm DIMENSION AS SHOWN.
2. LOOSEN M10 BOLT SECURING BELT TENSIONER.
3. TENSION BELT BY ADJUSTING TENSIONER USING SPANNER IN DIRECTION OF ARROW 'X' UNTIL SETTING OF 25-30 IS REACHED.
4. RE-TIGHTEN M10 BOLT TO SECURE TENSIONER IN POSITION.



Note:

WHEN FITTINGS  $\frac{3}{4}$ " DIA CAM FOLLOWERS TO QUADRANT ASSEMBLY IT IS NECESSARY TO TORQUE NUTS TO 26 FT/LB.

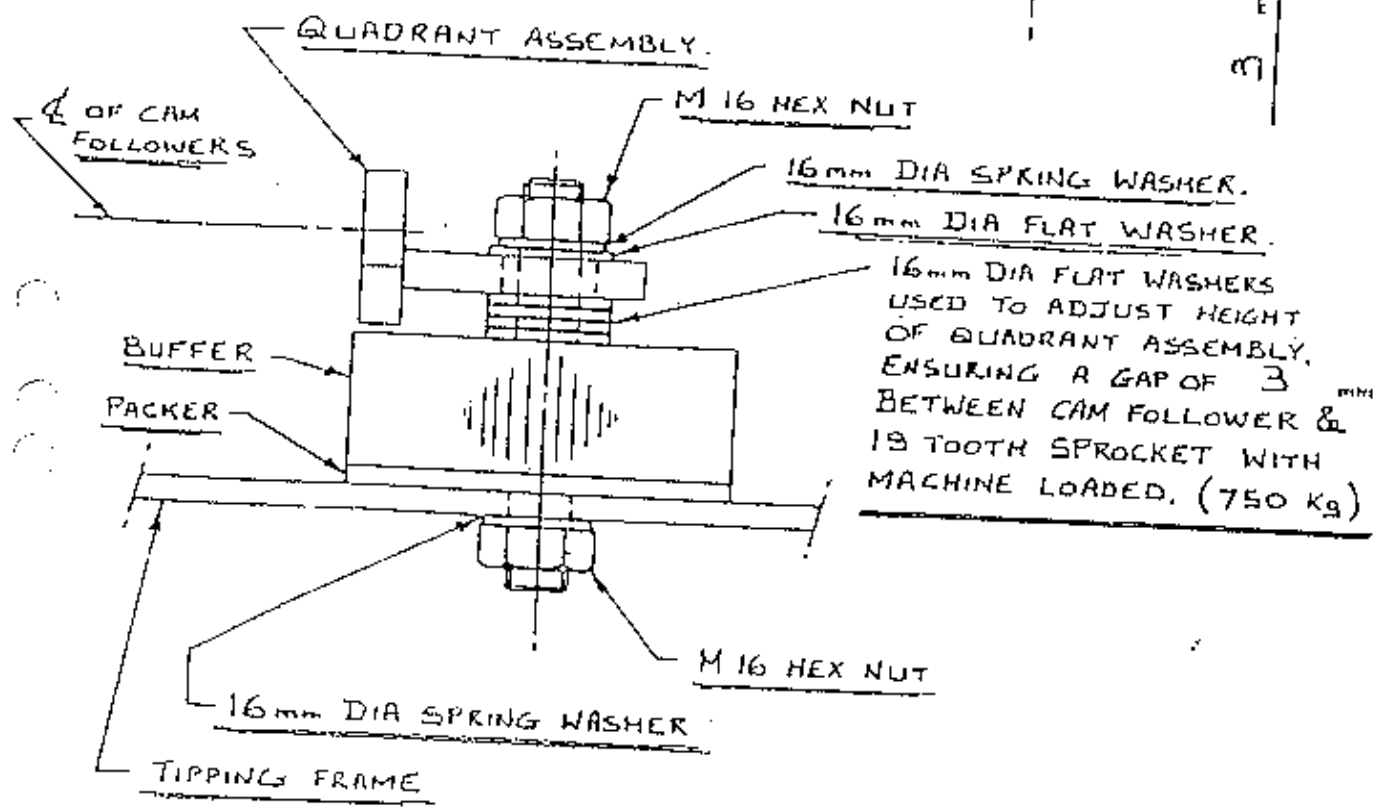
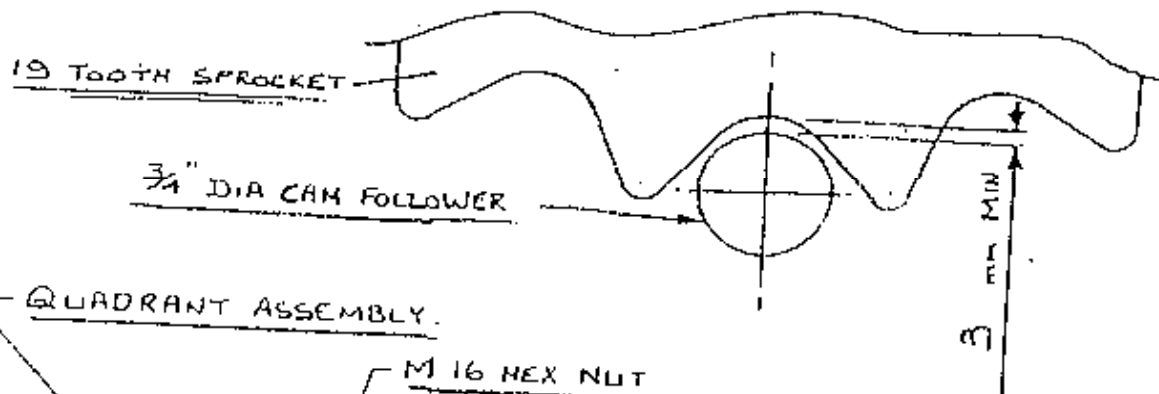


Note:

ENSURE THAT M20 HEX HD BOLT X 110 mm LONG USED TO MOUNT 4" DIA SUPPORT WHEELS ON TURNABLE ASSEMBLY IS POSITIONED WITH BOLT HEAD TO INSIDE TO AVOID FOULING  $\frac{3}{4}$ " DIA CAM FOLLOWER.

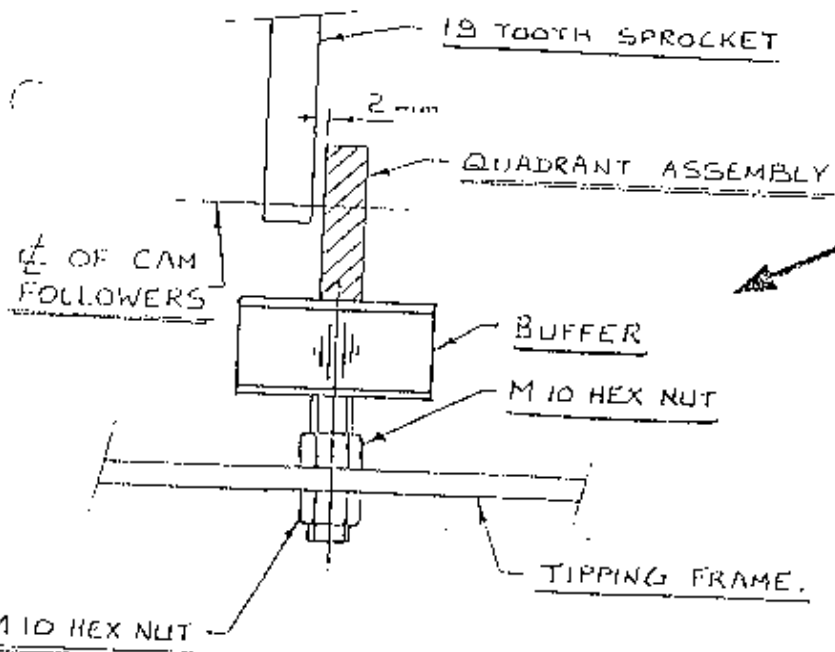
TANCO AUTOWRAP (1992 MODEL)

QUADRANT ASSEMBLY INSTRUCTIONS.



TANCO AUTO WRAP. 1992

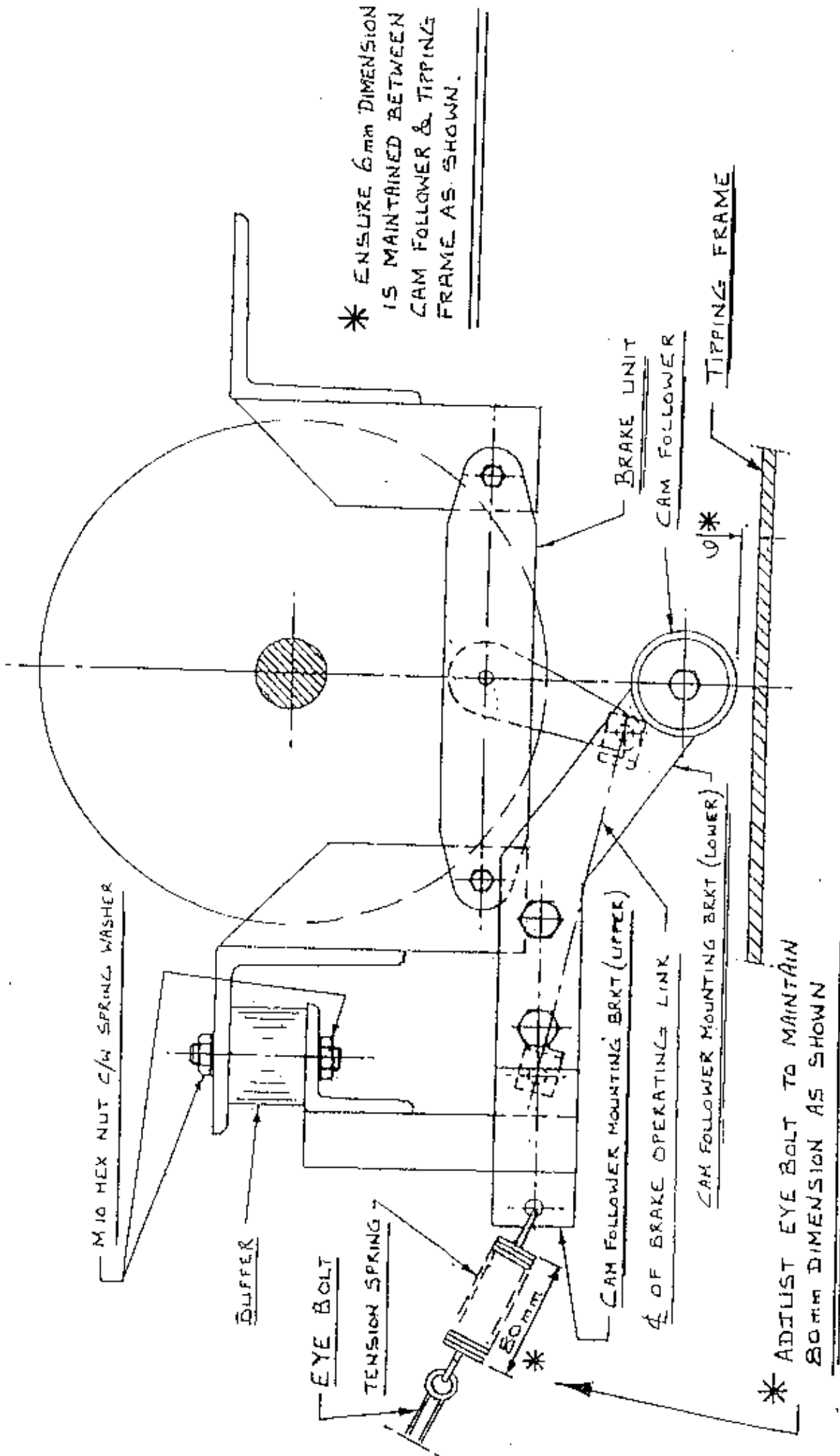
INDEX SHAFT. SPROCKET CLEARANCE ADJUSTMENT.



NOTE:  
 AFTER SETTING QUADRANT POSITION ADJUST CENTRE BUFFER HEIGHT UNTIL IT TOUCHES LOWER EDGE OF QUADRANT ASSEMBLY AS SHOWN.

# DANCO AUTO WRAP (3)2)

## INDEX SHAFT. DISC BRAKE ADJUSTMENT



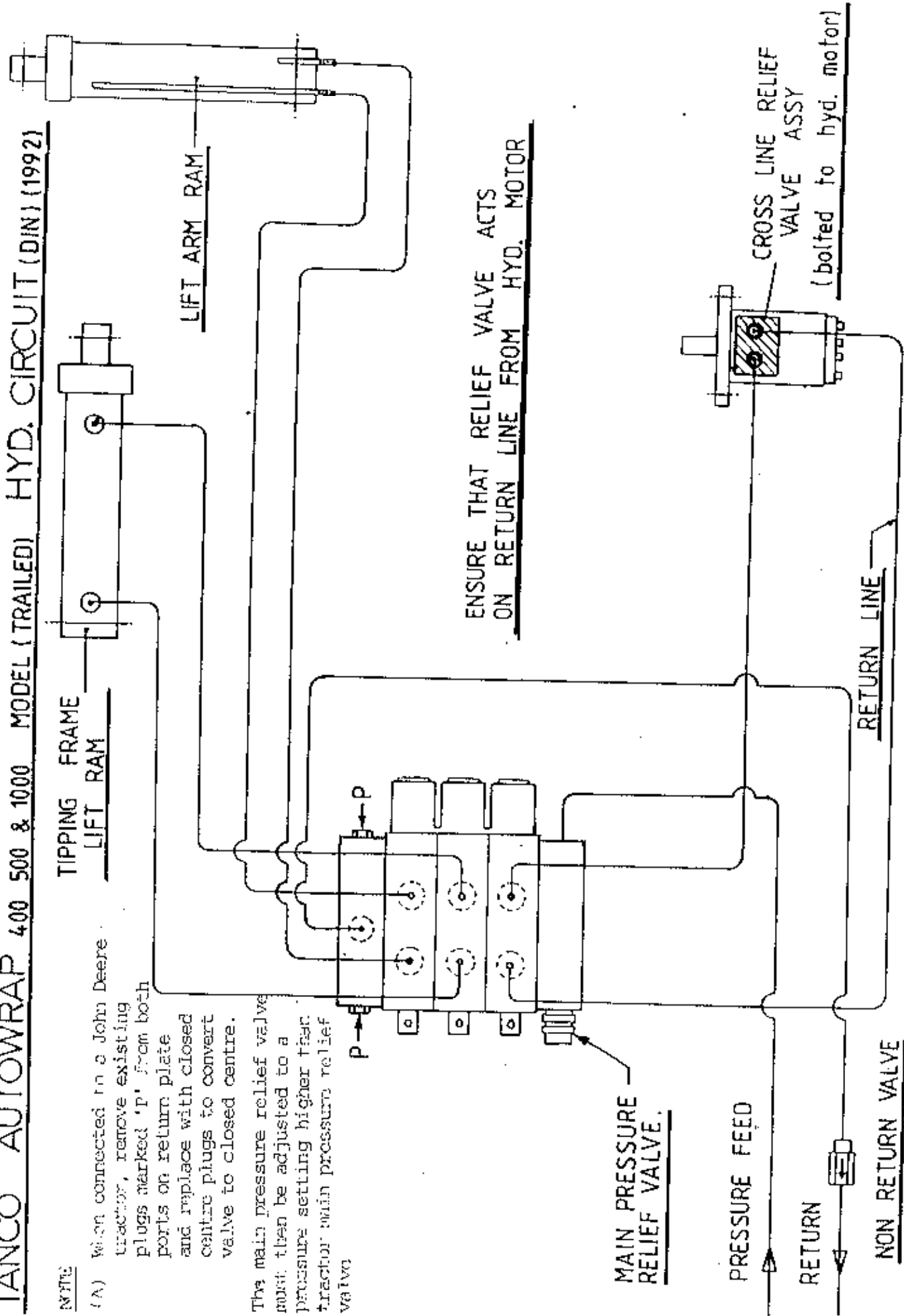
**TANCO AUTOWRAP 400 500 & 1000 MODEL (TRAILED) HYD. CIRCUIT (DIN) (1992)**

**NOTE**

(A) When connected to a John Deere tractor, remove existing plugs marked 'P' from both ports on return plate and replace with closed centre plugs to convert valve to closed centre.

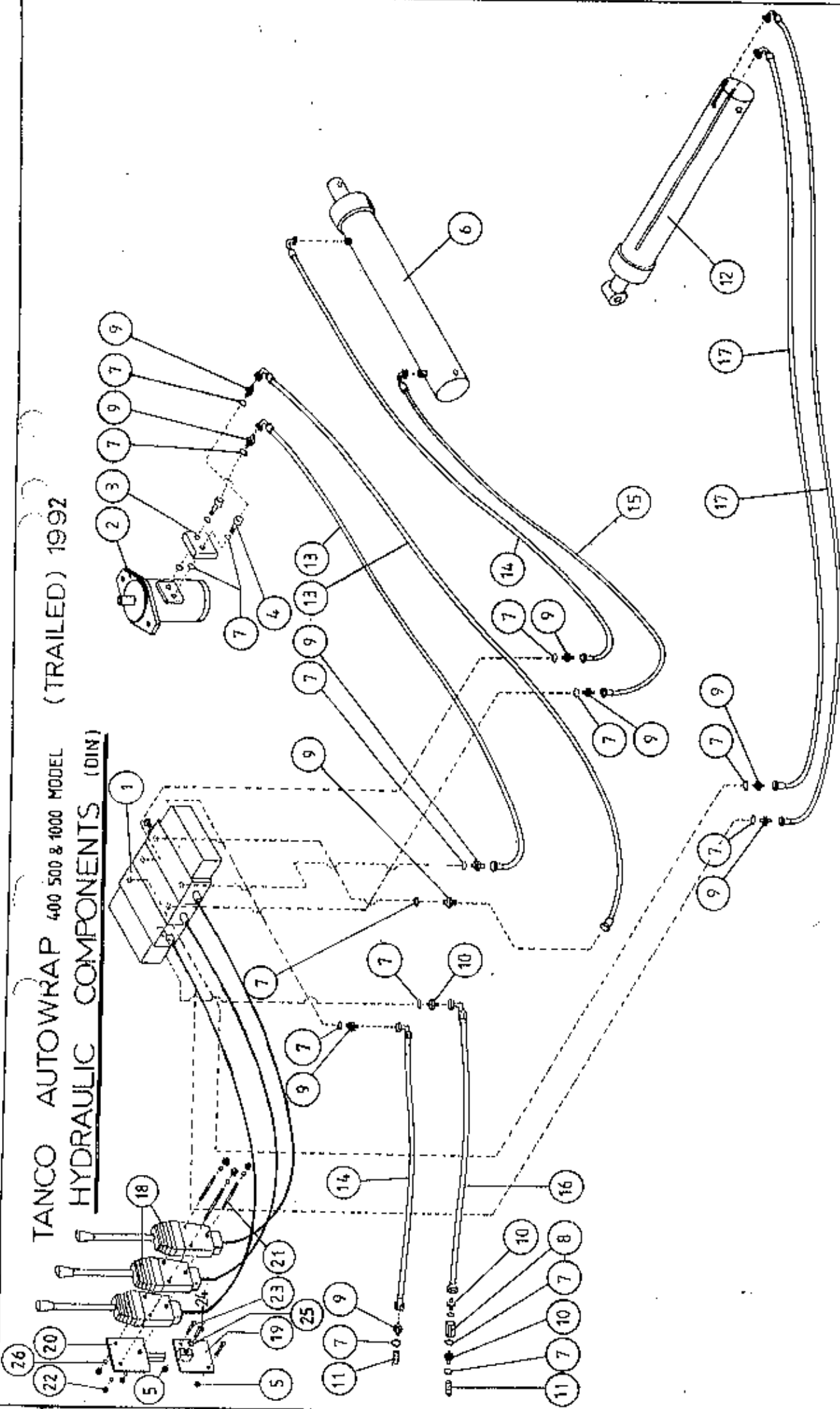
The main pressure relief valve must then be adjusted to a pressure setting higher than tractor main pressure relief valve.

**ENSURE THAT RELIEF VALVE ACTS ON RETURN LINE FROM HYD. MOTOR**



TANCO AUTOWRAP 400 500 & 1000 MODEL (TRAILED) 1992

HYDRAULIC COMPONENTS (DIN)



TANCO AUTOWRAP 400/500/1000 MODEL (TRAILED) 1992

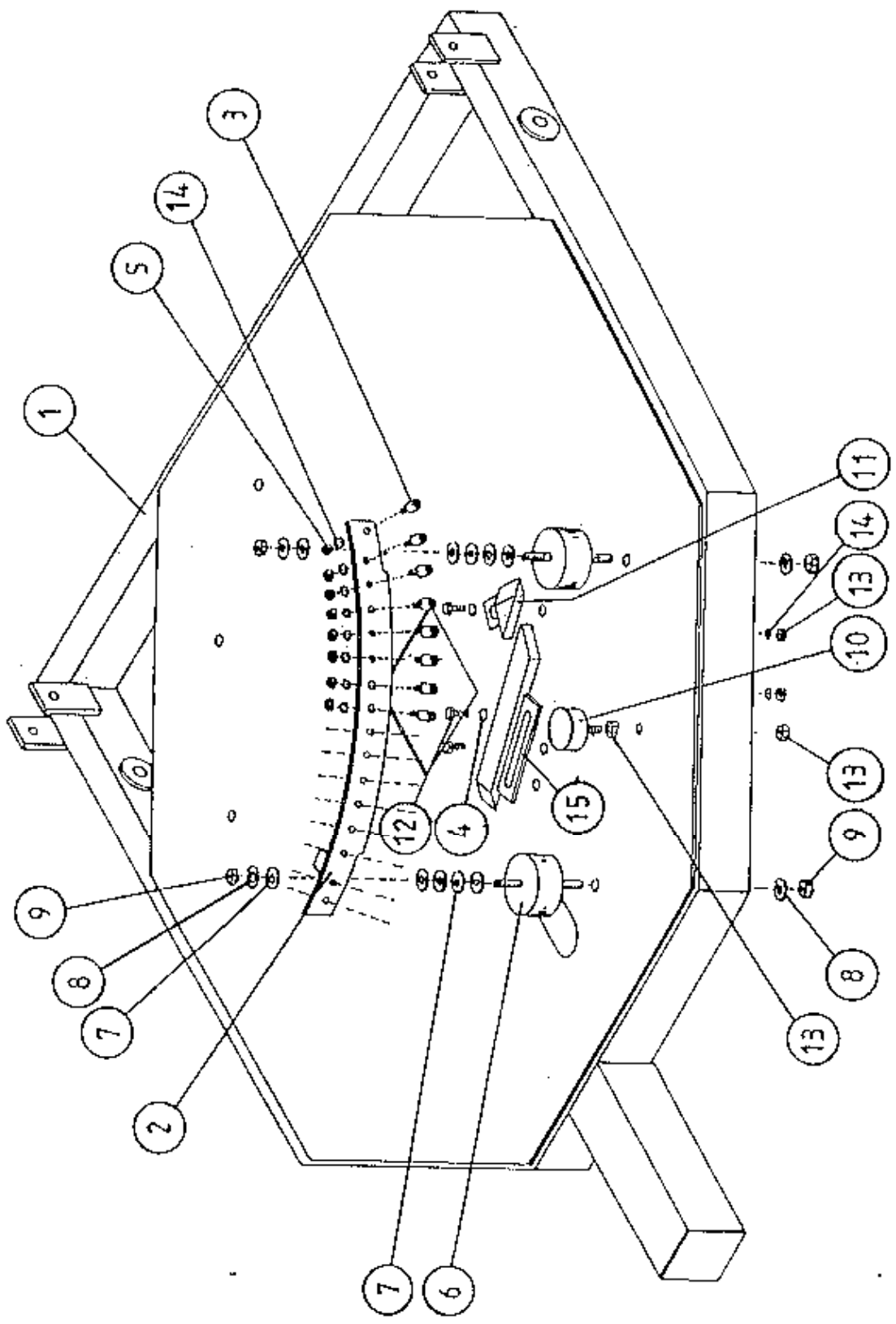
HYDRAULIC COMPONENTS (DIN)

PARTS LIST

<u>ITEM NO.</u>	<u>DESCRIPTION</u>	<u>QTY.</u>	<u>PART NO.</u>
1.	3 BANK SPOOL VALVE (DIN) C/W LEVERS	1	Z01-03-018D
2.	HYDRAULIC MOTOR (C.L.)	1	Z01-02-AR75
3.	CROSS LINE RELIEF VALVE	1	Z01-03-002
4.	1/2" BSP BOTTOM BANJO BOLT (SPECIAL)	2	
5.	M10 LOCKNUT	2	Z23-10
6.	HYD. RAM (FOR TIPPING FRAME)	1	Z01-01-AR687
7.	1/2" DOWTY WASHER	18	Z01-04-03
8.	1/2" NON RETURN VALVE	1	Z01-03-017
9.	1/2" x 3/8" ADAPTOR	10	Z01-06-06-08
10.	1/2" x 1/2" ADAPTOR	3	Z01-06-08-08
11.	1/2" MALE END Q/R COUPLING	2	Z01-15-081
12.	HYD. RAM (FOR LIFT ARM)	1	Z01-01-AW
13.	96" ST/90 3/8" D/W HOSE	2	Z38-R2-96-S9
14.	84" ST/90 3/8" D/W HOSE	2	Z38-R2-84-S9
15.	72" ST/90 3/8" D/W HOSE	1	Z38-R2-72-S9
16.	84" ST/90 1/2" S/W HOSE	1	Z12-R1-84-S9
17.	120" ST/90 3/8" D/W HOSE	2	Z38-R2-120S9
18.	3 1/2" METER CABLE C/W ACTUATOR	1	Z004-03-0075 Z004-03-009 Z004-03-014
19.	ACTUATOR MTG. BRACKET BOTTOM HALF	1	WD60-AMBB
20.	ACTUATOR MTG. BRACKET TOP HALF	1	WD60-AMBT/WSB150
21.	TIE BOLT (M8 x 150mm LONG)	3	
22.	M8 HEX NUT	6	Z18-08
23.	M10 HEX HD. SETS x 40mm LONG	2	Z26-064S
24.	M12 HEX HD. SET x 30mm LONG	1	Z26-082S
25.	M12 HEX NUT	1	Z18-12
26.	8mm DIA SPRING WASHER	6	Z12-02-08



TANCO AUTOWRAP 1000 MODEL 1992  
INDEXING QUADRANT ASSY 75% OVERLAP WITH 750mm FILM



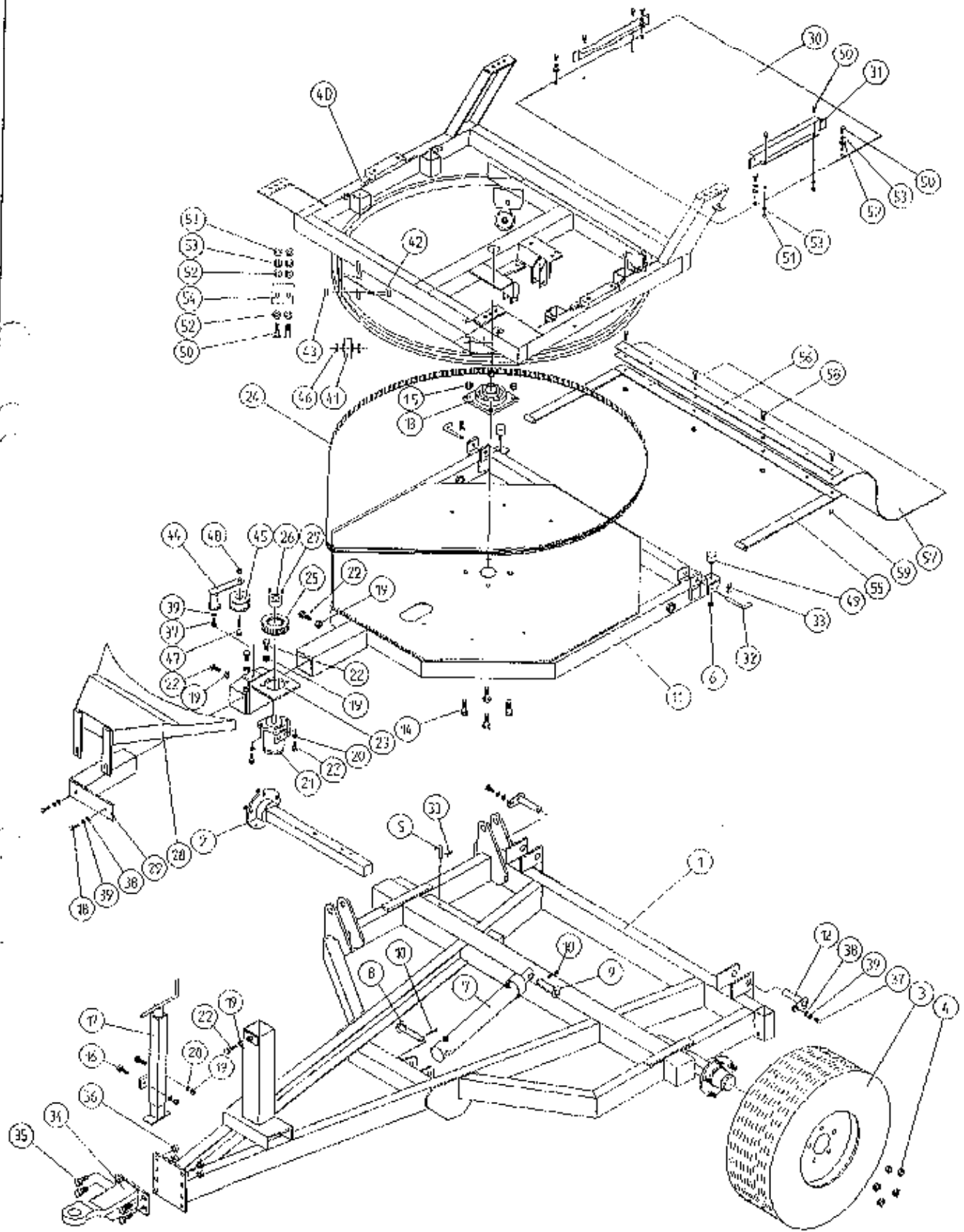
TANCO AUTOWRAP 1000 MODEL 1992

PARTS LIST

INDEXING QUADRANT ASSEMBLY (75% OVERLAP WITH 750MM WIDE FILM ROLL)

<u>ITEM NO.</u>	<u>DESCRIPTION</u>	<u>QTY.</u>	<u>PART NO.</u>
1.	TIPPING FRAME ASSY.	1	WD60-TF
2.	QUADRANT ASSY.	1	WD623-QA
3.	3/4" DIA CAM FOLLOWER (HEAVY DUTY) C/W GREASE NIPPLE	16	Z06-425
4.	10mm DIA FLAT WASHERS	3	Z11-02-10
5.	3/8" UNF LOCKNUTS (BINX)	16	Z20-12
6.	RUBBER BUFFER 100mm DIA x 40mm LONG	2	Z40-22
7.	16mm DIA FLAT WASHERS	10	Z10-02-16
8.	16mm DIA SPRING WASHERS	4	Z12-02-16
9.	M16 HEX NUT	4	Z18-16
10.	RUBBER BUFFER 50mm DIA x 25mm LONG	1	Z40-23
11.	CAM ASSY (SHORT)	1	WD623-CAS
12.	M10 HEX HD SET x 30mm LONG	3	Z26-0625
13.	M10 HEX NUT	5	Z18-10
14.	10mm DIA SPRING WASHER	19	Z12-02-10
15.	CAM ASSY. (LONG)	1	WD623-CAL

# TANCO AUTOWRAP 1000 MODEL



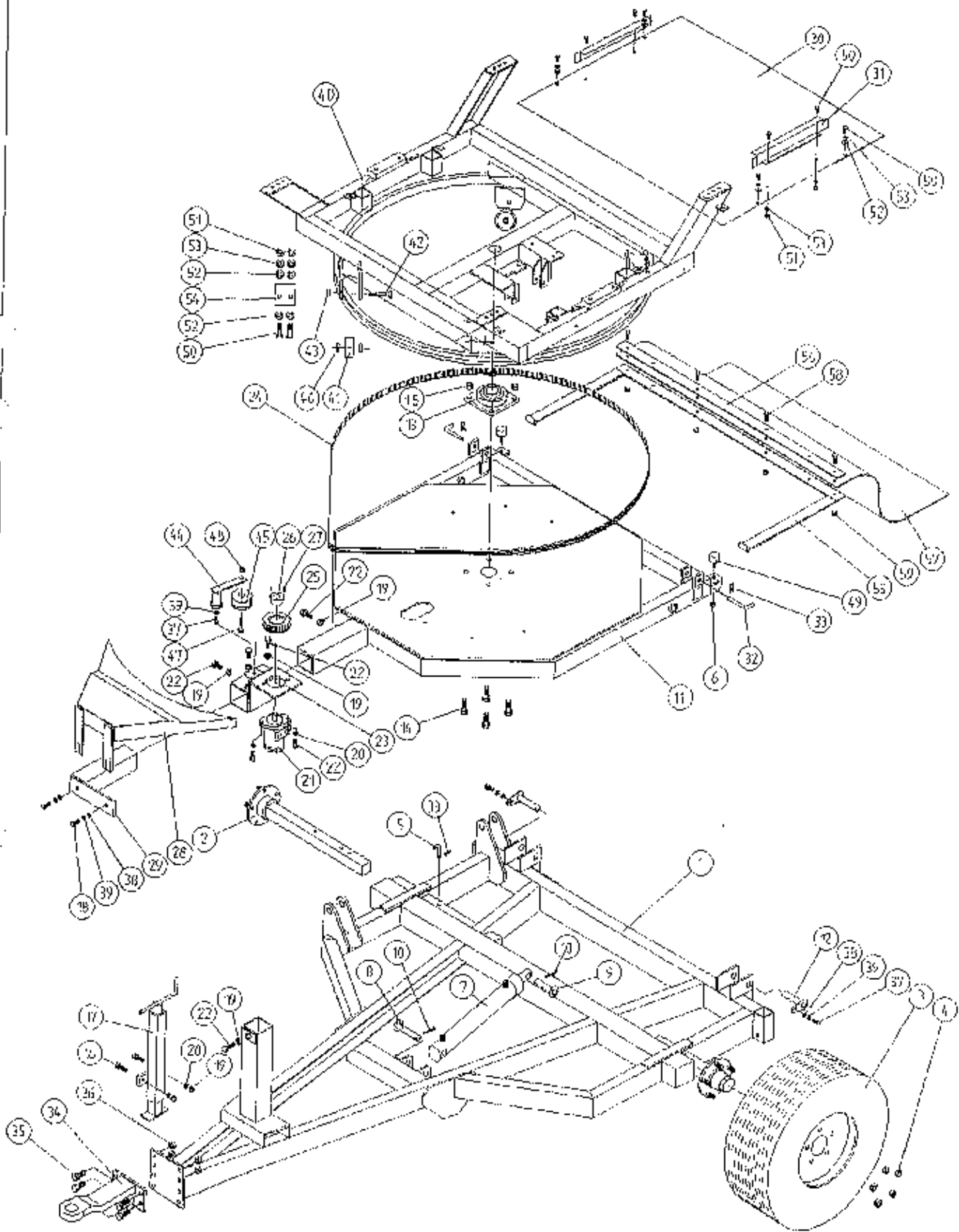
WIDB23 - PL 5

## TANCO AUTOWRAP 1000 MODEL

## PARTS LIST

ITEM NO.	DESCRIPTION	QTY	PART NO.
1.	CHASSIS ASSY	1	WD60-CHA
2.	STUB AXLE (ADJUSTABLE)	1	Z04-033
3.	WHEELS	2	Z04-031
4.	WHEEL NUTS	10	Z04-0331
5.	BISSEL PIN	1	Z03-22-AW82
6.	M10 HEX NUT		Z18-10
7.	HYD. RAM	1	Z01-01-AR687
8.	RAM BOTTOM PIVOT PIN	1	Z03-02-330
9.	RAM TOP PIVOT PIN	1	Z03-03-50
10.	2" x 1/4" SPLIT PIN	2	Z03-21-29
11.	TIPPING FRAME ASSY	1	WD60-TF
12.	TIPPING FRAME PIVOT PIN C/W GREASE NIPPLE	2	Z03-01-905
13.	2" DIA FLANGE BEARING	1	Z39-60
14.	1/2" UNF HEX HD. SET x 2" LONG	4	Z06-49
15.	1/2" UNF LOCKNUT	4	Z30B-064
16.	M12 HEX HD. SET x 40mm LONG	4	Z20-10
17.	SCREW JACK ASSY		Z26S-084
18.	M10 HEX HD. SET x 30mm LONG	1	WD60-JA
19.	M12 HEX NUT		Z26-0623
20.	12mm DIA SPRING WASHER		Z18-12
21.	HYD. MOTOR C.L.		Z12-02-12
22.	M12 HEX HD. SETS x 30mm LONG	1	Z01-02-AR1S
23.	HYD. MOTOR MOUNTING ASSY	7	Z26-082S
24.	170" LONG x 1/2" PITCH x 1" WIDE TOOTHED BELT	1	WD60-MMB
25.	4" DIA x 1/2" PITCH TOOTH PULLY	1	Z05-02-AW2
26.	TAPER LOCK BUSH TO SUIT 1" DIA SHAFT	1	Z09-005-AW1
27.	M10 STUDS x 15mm	1	Z09-005-AW2
28.	HYD. MOTOR GUARD ASSY.	2	Z28-01
29.	HYD. MOTOR GUARD MOUNTING BRACKET	1	WD60-MMG
30.	TURN TABLE COVER PLATE	1	WD60-MAMG
31.	BELT GUIDE ASSY.	1	WD623-115
32.	BISSEL PIN	2	WD625-BQ
33.	4mm "R" CLIP	2	Z03-22-AW100
34.	HITCH ASSY	3	Z36-02
35.	M16 HEX HD, SET x 45mm LONG	1	WD60-MFT
36.	M16 LOCKNUTS	4	Z26-123S
37.	M10 HEX HD. SET x 25mm LONG (TUT&LOCK)	4	Z23-16
38.	10mm DIA MACHINED FLAT WASHER	3	Z26S-061
39.	10mm DIA SPRING WASHER	4	Z11-02-10
40.	TURNTABLE ASSY	4	Z12-02-10
41.	SUPPORT WHEELS (4" DIA)	1	WD65-TA
42.	AXLE ASSY. C/W GREASE NIPPLE	4	Z06-466
43.	M20 LOCKNUTS		Z03-22-AW/AX
44.	ROSTA TENSIONING UNIT ARM		Z39-60
45.	STEPPED ROLLER C/W BEARINGS	4	Z23-20
46.	SPACER	1	Z06-454
47.	M10 HEX HD. BOLT x 60mm LONG	1	Z06-456
		1	Z18-12
		1	Z26-0673

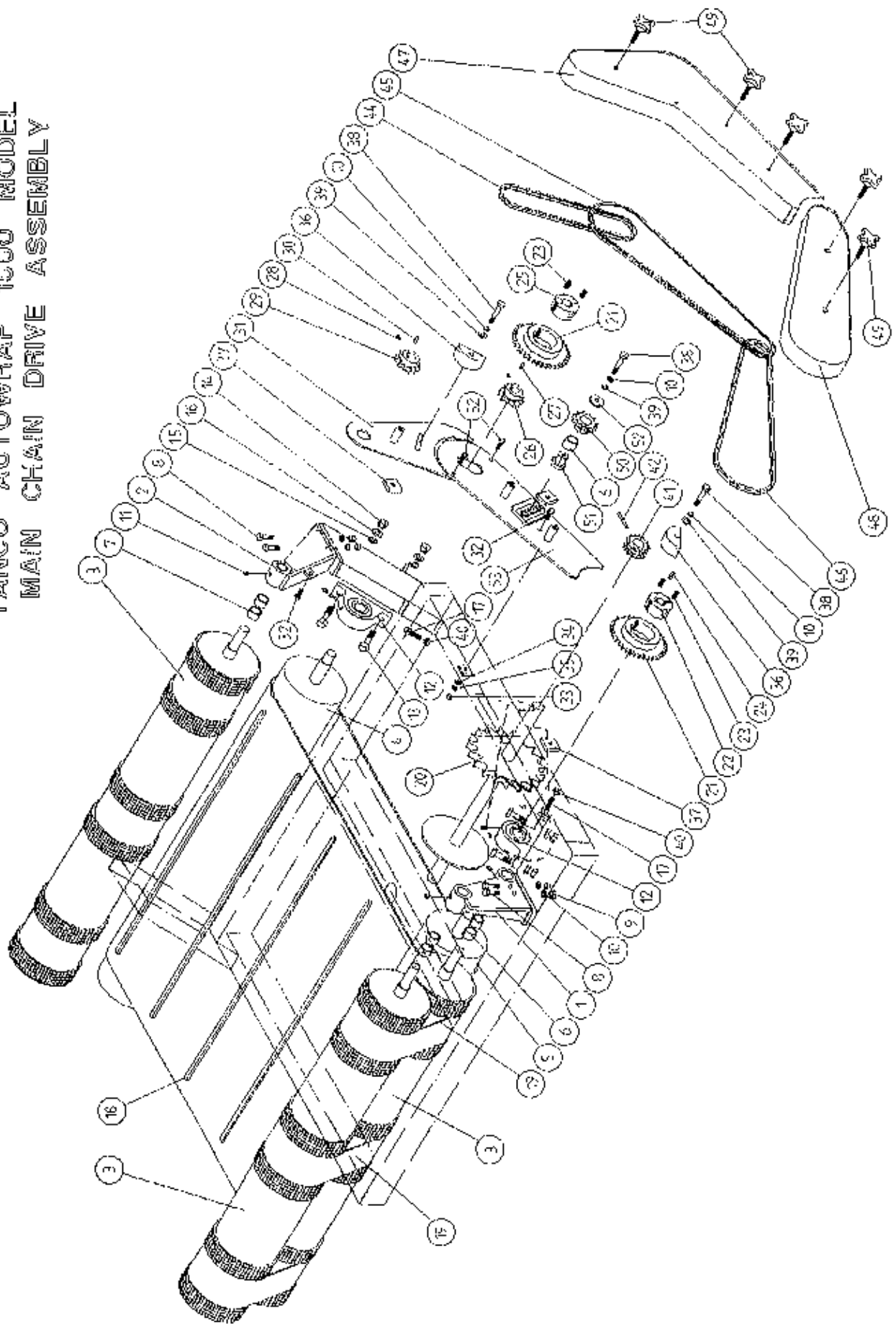
# TANCO AUTOWRAP 1000 MODEL



WID023 - PL 5

ITEM NO.	DESCRIPTION	QTY	PART NO.
48.	M10 LOCKNUT	1	Z23-10
49.	BUFFER 50mm DIA x 40mm LONG	2	Z40-20
50.	M8 HEX HD. SET x 20mm LONG	8	Z26-039S
51.	M8 HEX NUT	4	Z18-08
52.	8mm DIA FLAT WASHER (MUD FLAP)	4	Z11-02-081
53.	8mm DIA SPRING WASHER	8	Z12-02-08
54.	SCRAPER	2	WD60-70S
55.	RUBBER MAT MOUNTING ASSY.	1	WD63-RMM
56.	CLAMPING PLATE	1	WD63-1300
57.	BALE MAT	1	Z05-02AW
58.	M8 HEX HD SET x 25mm LONG	4	Z26-040S
59.	M8 LOCKNUTS	4	Z23-08

TANCO AUTOWRAP 1000 MODEL  
 MAIN CHAIN DRIVE ASSEMBLY



WVD 623 - LA2

TANCO AUTOWRAP 1000 MODEL

WD623-LA2

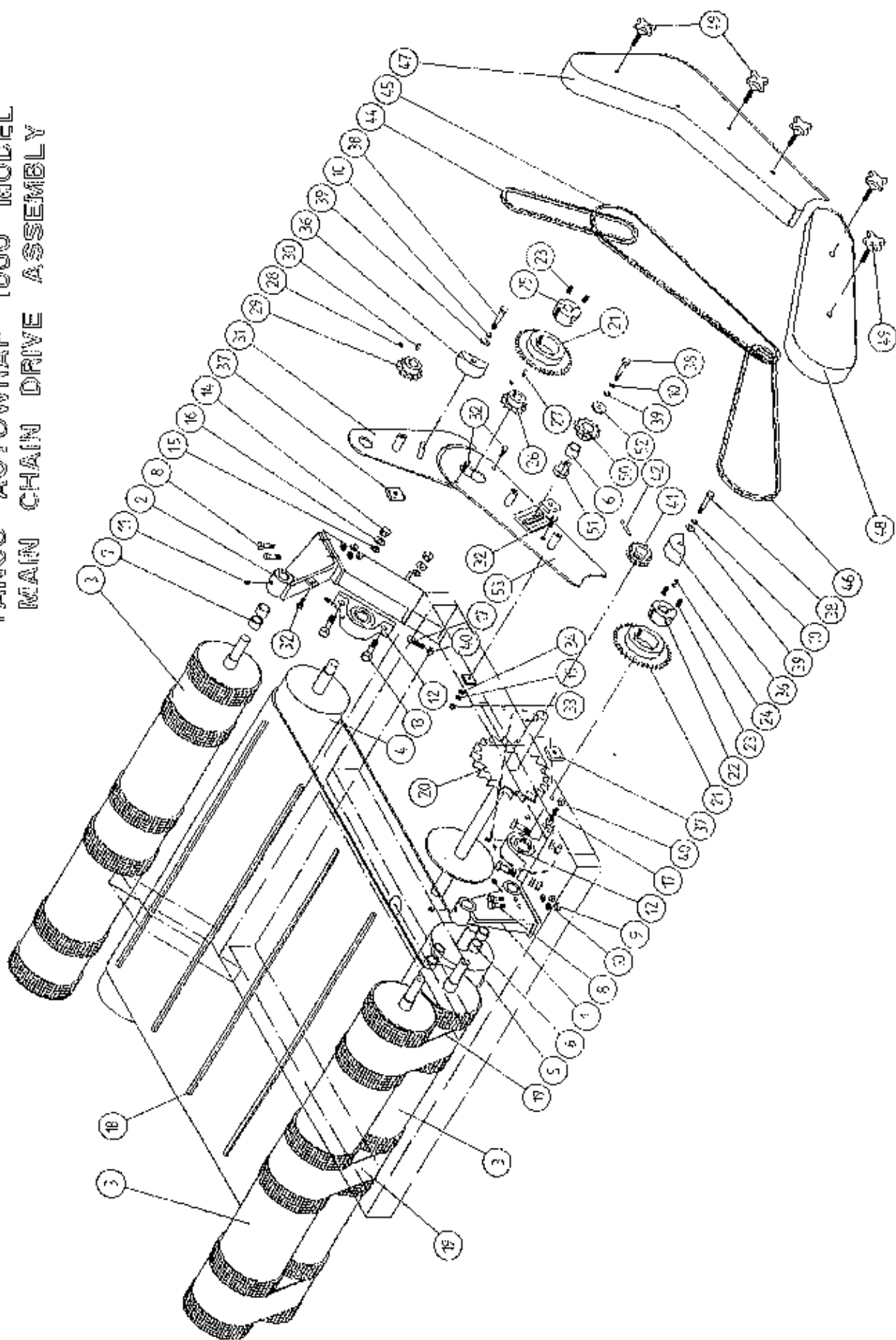
MAIN CHAIN DRIVE ASSY

PARTS LIST

<u>ITEM NO.</u>	<u>DESCRIPTION</u>	<u>QTY.</u>	<u>PART NO.</u>
1.	ROLLER MOUNTING BRACKET	1	WD623-RM3
2.	ROLLER MOUNTING BRACKET	1	WD623-RM2
3.	TOP ROLLER ASSY.	3	WD623-TRA
4.	DRIVE ROLLER ASSEMBLY SHORT	1	WD623-RSA
5.	DRIVE ROLLER ASSEMBLY LONG	1	WD623-RLA
6.	OILITE BUSH 1 1/4" O.D. x 1" I.D. x 1" LONG	5	Z06-10
7.	OILITE BUSH 1 1/4" O.D. x 1" I.D. x 3/4" LONG	2	Z06-105
8.	M10 HEX HD SETS x 35mm LONG	5	Z26-063S
9.	M10 HEX NUT	4	Z18-10
10.	10mm DIA SPRING WASHER	8	Z12-02-10
11.	1/8" BSP ST/GREASE NIPPLE		Z39-60
12.	1 1/4" PILLOW BLOCK BEARING	2	Z06-485
13.	M14 HEX HD BOLT x 50mm LONG	4	Z26-1048
14.	M14 HEX NUT	4	Z18-14
15.	14mm DIA MACHINED FLAT WASHER	4	Z11-02-14
16.	14mm SPRING WASHER	4	Z12-02-14
17.	M12 HEX HD SET x 60mm LONG	2	Z26-088S
18.	BALE BELT	1	Z05-02AWV1
19.	BALE LIFT BELT	3	Z05-02-AW3
20.	SPROCKET SHAFT ASSY	1	WD625-SPR
21.	38 TOOTH X 1/2" PITCH SIMPLEX SPROCKET TO SUIT 08B-1 CHAIN	2	Z06-AW3
22.	TAPER LOCK BUSH 2012 x 1 1/4" I.D.	1	Z06-AW22
23.	SOCKET SCREWS	4	Z99
24.	KEY 5/16" x 5/16" x 32mm LONG	1	WD623-K32
25.	TAPER LOCK BUSH 2012 x 1" I.D.	1	Z06-AW21
26.	12 TOOTH x 5/8" PITCH SIMPLEX SPROCKET TO SUIT 10B-1 CHAIN	1	Z06-0623-323
27.	KEY 1/4" x 1/4" x 52mm LONG	1	WD623-K52
28.	M6 GRUB SCREW		Z28-006
29.	12 TOOTH x 5/8" PITCH SIMPLEX SPROCKET TO SUIT 10B-1 CHAIN	1	Z06-0623-310



TANCO AUTOWRAP 1000 MODEL  
 MAIN CHAIN DRIVE ASSEMBLY



WD 623 - LA2

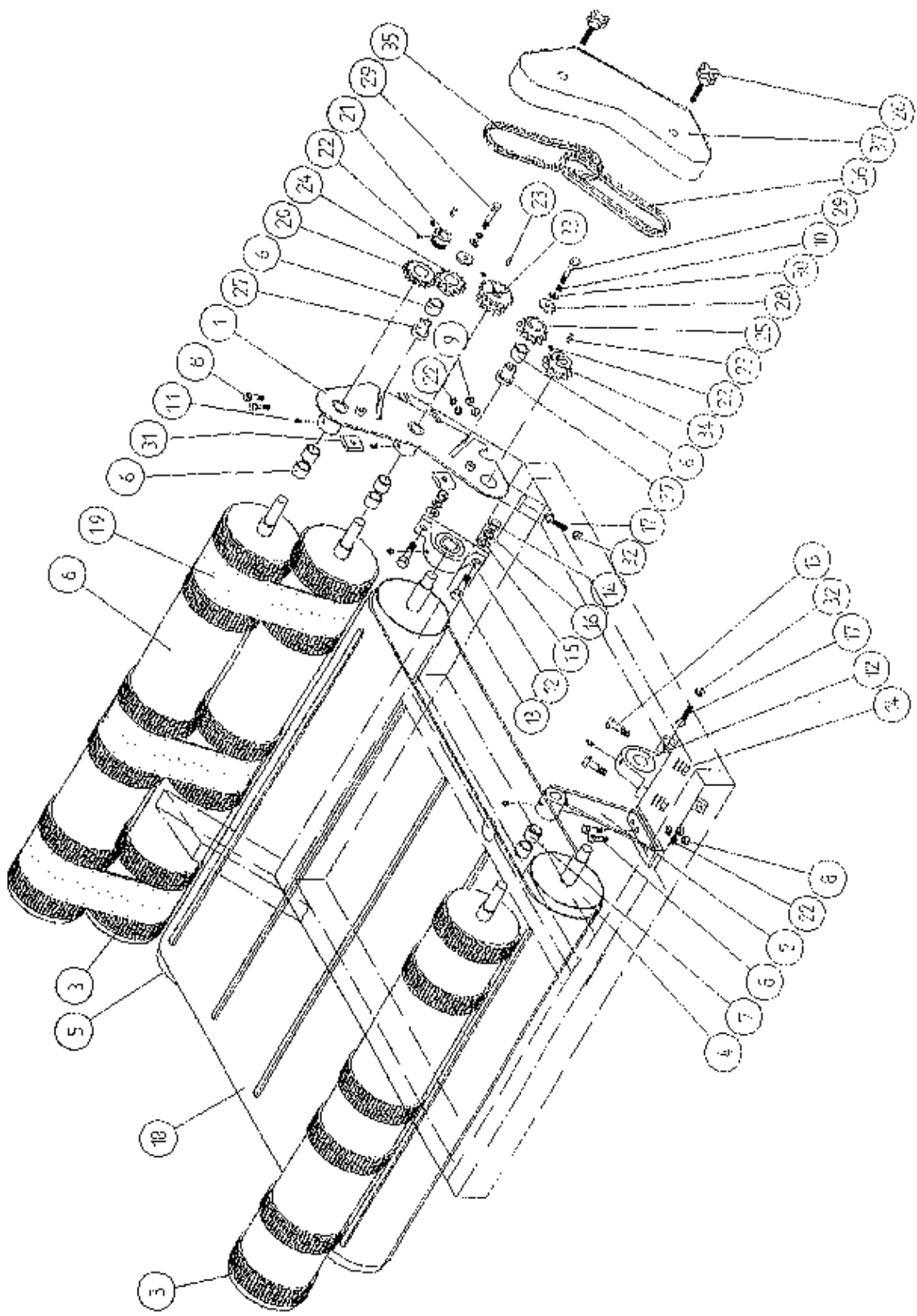
TANCO AUTOWRAP 1000 MODEL

MAIN CHAIN DRIVE ASSY

PARTS LIST

<u>ITEM NO.</u>	<u>DESCRIPTION</u>	<u>QTY.</u>	<u>PART NO.</u>
30.	KEY 1/4" x 1/4" x 25mm LONG	1	WD623-K25
31.	CHAIN GUARD BACK PLATE ASSY. (UPPER)	1	WD623-BPU
32.	M8 HEX HD SET x 30mm LONG	4	Z26-041S
33.	M8 HEX NUT	3	Z18-08
34.	8mm DIA FLAT WASHER	3	Z11-02-08
35.	8mm DIA SPRING WASHER	3	Z12-02-08
36.	CHAIN TENSIONER	2	WD60-776
37.	LOCKING PLATE	3	WD60-060
38.	M10 HEX HD BOLT x 60mm LONG	3	Z26-067B
39.	10mm DIA FLAT WASHER	3	Z11-02-10
40.	M12 HEX NUT	2	Z18-12
41.	DOUBLE SIMPLEX SPROCKET	1	Z06-D623-322
42.	5/16" DIA TENSION PIN x 45mm LONG	1	Z03-20-022
43.	3/16" DIA TENSION PIN x 45mm LONG	1	Z03-21-15
44.	CHAIN 10B-1 (5/8" PITCH SIMPLEX) x 48 PITCHES (INCL. JOINER)	1	Z09-06-10-48
45.	CHAIN 08B-1 (1/2" PITCH SIMPLEX) x 100 PITCHES (INCL 1/2 LINK & JOINER)	1	Z09-06-08-100
46.	CHAIN 08B-1 (1/2" PITCH SIMPLEX) x 105 PITCHES (INCL 1/2 LINK & JOINER)	1	Z09-06-08-105
47.	CHAIN GUARD	1	WD623-CGL
48.	CHAIN GUARD	1	WD625-CGM
49.	BLACK KNOB 1262-M M10 x 50	5	Z49-96
50.	15 TOOTH x 1/2" PITCH SIMPLEX SPROCKET TO SUIT 08B-1 CHAIN	1	Z06-D623-324
51.	SPROCKET SLEEVE	1	WD623-072
52.	RETAINING COLLAR	1	WD623-071
53.	CHAIN BACK PLATE ASSY (LOWER)	1	WD623-BPL

TANCO AUTOWRAP 1000  
SECONDARY CHAIN DRIVE ASSEMBLY



WD 225-6A9

TANCO AUTOWRAP 1000 MODEL

WD623-LA2

SECONDARY CHAIN DRIVE ASSY

PARTS LIST

<u>ITEM NO.</u>	<u>DESCRIPTION</u>	<u>QTY.</u>	<u>PART NO.</u>
1.	ROLLER MOUNTING BRACKET	1	WD623-RM4
2.	ROLLER MOUNTING BRACKET	1	WD623-RM2
3.	TOP ROLLER ASSY.	3	WD623-TRA
4.	DRIVE ROLLER ASSEMBLY (SHORT)	1	WD623-RSA
5.	DRIVE ROLLER ASSEMBLY (LONG)	1	WD623-RLA
6.	OILITE BUSH (1 1/4" O.D. x 1" I.D. x 1" LONG)	6	Z06-10
7.	OILITE BUSH (1 1/4" O.D. x 1" I.D. x 3/4" LONG)	2	Z06-105
8.	M10 HEX HD SETS x 35mm LONG	4	Z26-063S
9.	M10 HEX NUT	4	Z18-10
10.	10mm DIA SPRING WASHER	6	Z12-02-10
11.	1/8" BSP ST/GREASE NIPPLE		Z39-60
12.	1 1/4" PILLOW BLOCK BEARING	2	Z06-485
13.	M14 HEX HD BOLT x 50mm LONG	4	Z26-1048
14.	M14 HEX NUT	4	Z18-14
15.	14mm DIA MACHINED FLAT WASHER	4	Z11-02-14
16.	14mm DIA SPRING WASHER	4	Z12-02-14
17.	M12 HEX HD SET x 60mm LONG	2	Z26-088S
18.	BALE BELT	1	Z05-02AWV1
19.	BALE LIFT BELT	3	Z05-02-AW3
20.	A00B1-19 INDUSTRIAL RATCHET FREEWHEEL TO SUIT 08B-1 CHAIN	1	Z00-90
21.	A211 ADAPTOR 1" I.D.	1	Z00-901
22.	M6 GRUB SCREW		
23.	KEY 1/4" x 1/4" x 25mm LONG	3	WD623-K25
24.	15 TOOTH x 1/2" PITCH SIMPLEX SPROCKET TO SUIT 08B-1 CHAIN	1	Z06-0623-324
25.	12 TOOTH x 5/8" PITCH SIMPLEX SPROCKET TO SUIT 10B-1 CHAIN	1	Z06-0623-309
26.	BLACK KNOB 1262 M M10 x 50	2	Z49-12
27.	SPROCKET SLEEVE	2	WD623-072
28.	RETAINING COLLAR	2	WD623-071
29.	M10 HEX HD BOLT x 60mm LONG	2	Z26-067B

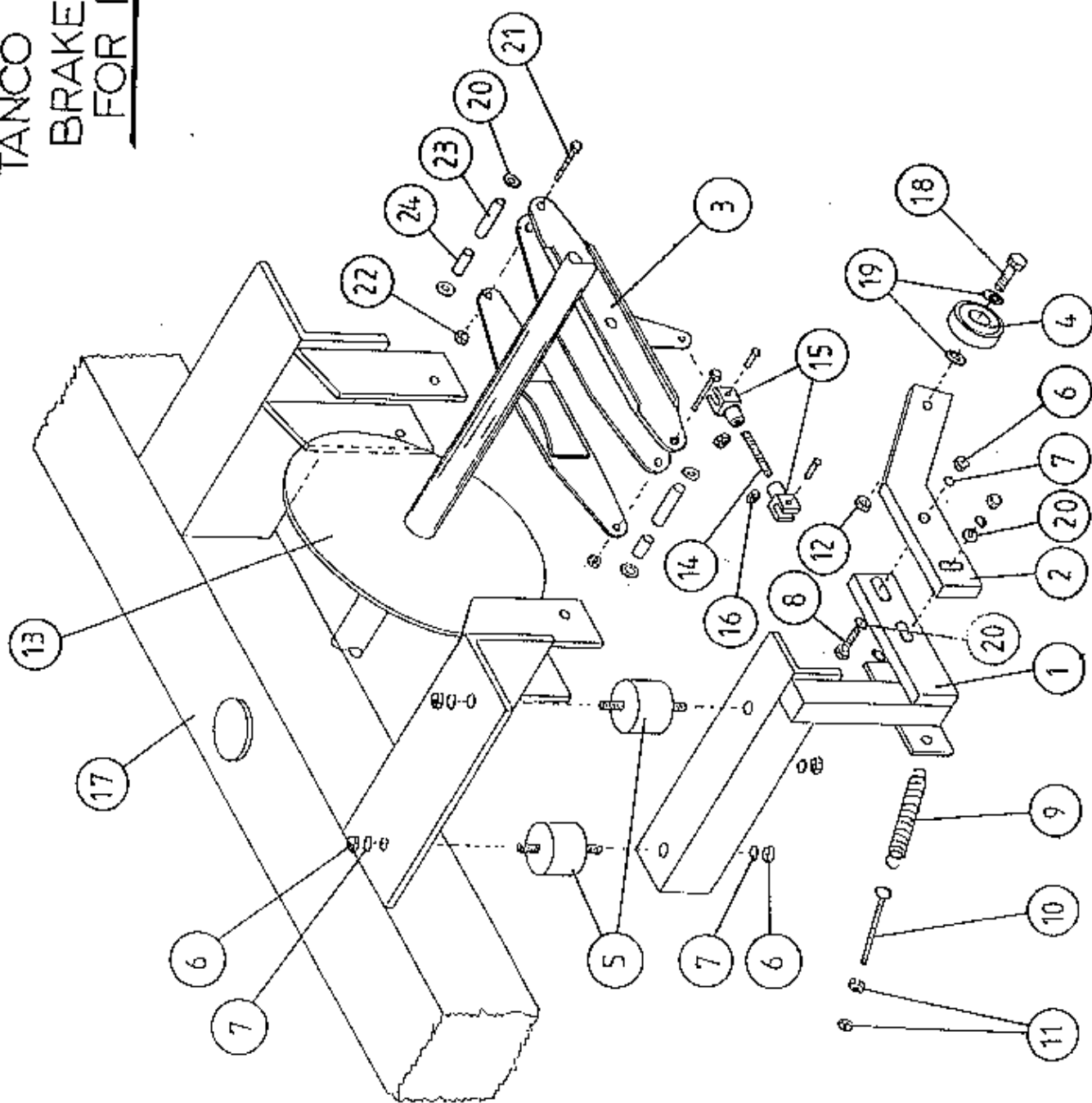
TANCO AUTOWRAP 1200 MODEL

SECONDARY CHAIN DRIVE ASSY

PARTS LIST

<u>ITEM NO.</u>	<u>DESCRIPTION</u>	<u>QTY.</u>	<u>PART NO.</u>
30.	10mm DIA FLAT WASHER	2	311-02-10
31.	LOCKING PLATE	2	WD60-060
32.	M12 HEX NUT		218-12
33.	DOUBLE SIMPLEX SPROCKET	1	Z06-D623-321
34.	12 TOOTH x 5/8" PITCH SIMPLEX SPROCKET TO SUIT 10B-1 CHAIN	1	Z06-D623-310
35.	CHAIN 08B-1 (1/2" PITCH SIMPLEX) x 48 PITCHES (INCL. JOINER)	1	Z09-06-08-48
36.	CHAIN 10B-1 (5/8" PITCH SIMPLEX) x 38 PITCHES (INCL. JOINER)	1	Z09-06-10-38
37.	CHAIN GUARD	1	WD625-GGS

TANCO AUTOWRAP 1992  
 BRAKE ARRANGEMENT  
 FOR INDEXING SHAFT



TANCO © 1987

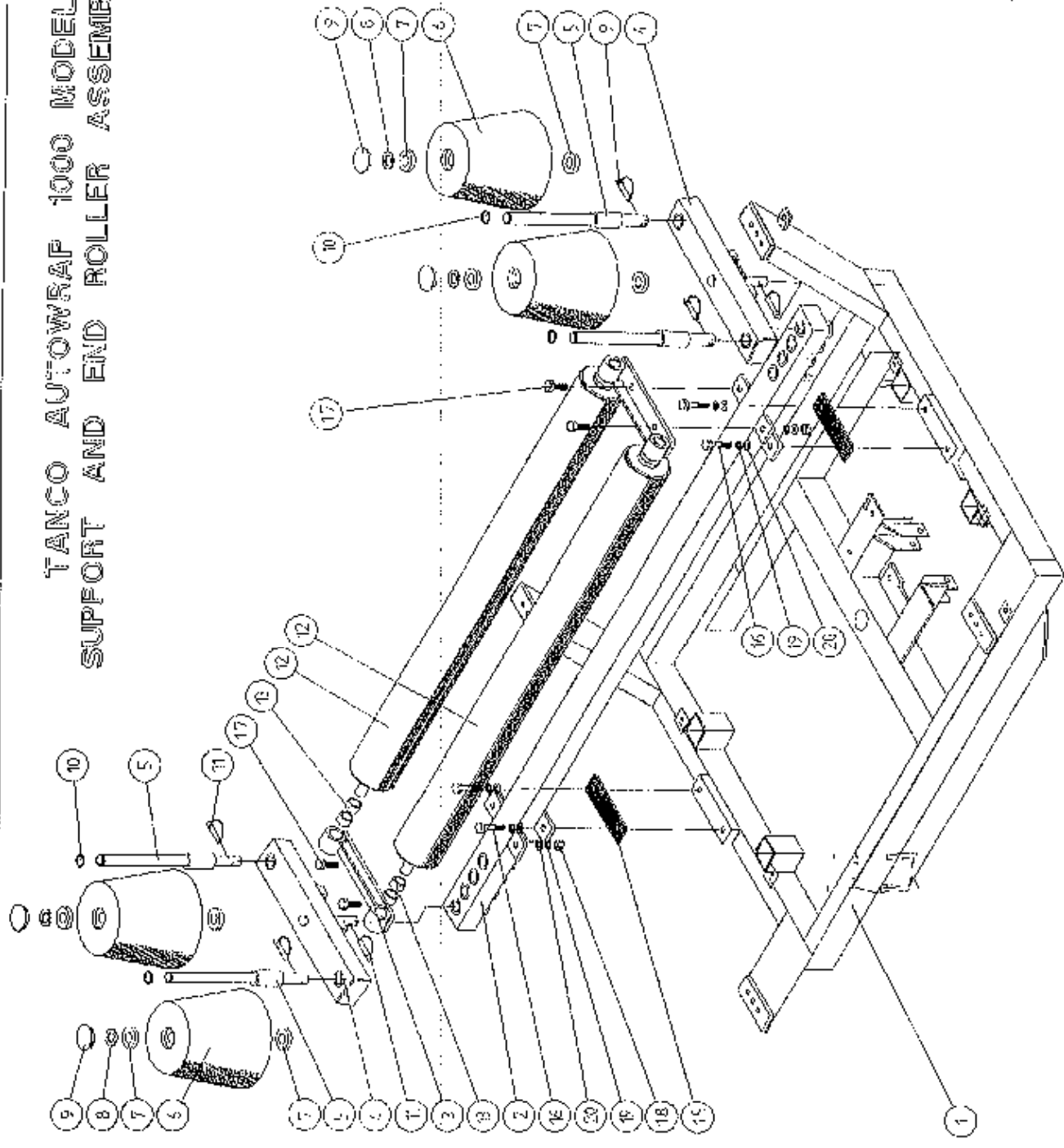
TANCO AUTOWRAP 1992

BRAKE ARRANGEMENT FOR INDEXING SHAFT

PARTS LIST

<u>ITEM NO.</u>	<u>DESCRIPTION</u>	<u>QTY.</u>	<u>PART NO.</u>
1.	CAM FOLLOWER MOUNTING BRACKET (UPPER)	1	WD60-CFMB
2.	CAM FOLLOWER MOUNTING BRACKET (LOWER)	1	WD60-804
3.	CALIPER DISC BRAKE UNIT	1	Z49-92
4.	BALL BEARING (6301)	1	Z06-43
5.	RUBBER BUFFER 50mm DIA x 30 LONG TYPE A 57 SHORE	2	Z40-21
6.	M10 HEX NUTS	6	Z18-10
7.	10mm DIA SPRING WASHERS	6	Z12-02-10
8.	M10 HEX HD SET x 40 LONG	2	Z26-0646
9.	TENSION SPRING	1	Z07-05
10.	EYE BOLT (M8)	1	WD60-EB
11.	M8 HEX NUTS	2	Z18-08
12.	M12 LOCKNUT	1	Z23-12
13.	SPROCKET/SHAFT ASSY	1	WD625 SPR
14.	5/16" UNF THREADED BAR x 90mm LONG	1	WD60-806
15.	5/16" UNF CLEVIS C/W PIN & CLIP	2	Z49-33
16.	5/16" UNF HEX NUT	2	Z15-05
17.	TURN TABLE	1	WD60-TT
18.	M12 HEX HD. SETS x 40mm LONG	1	Z26-0845
19.	12mm DIA FLAT WASHER	2	Z11-02-12
20.	10mm DIA FLAT WASHER	7	Z11-02-10
21.	3/8" UNF HEX HD. BOLT x 3" LONG	2	Z31B-102
22.	3/8" UNF LOCK NUT	2	Z15-06
23.	SPACER 1/2" O.D. x 13/32" I.D. x 1 1/2" LONG	2	
24.	SPACER 1/2" O.D. x 13/32" I.D. x 1/2" LONG	2	

TANCO AUTOWRAP 1000 MODEL  
SUPPORT AND END ROLLER ASSEMBLIES



WD 623-LA3



TANCO AUTOWRAP 1000 MODEL

WD623-LA3

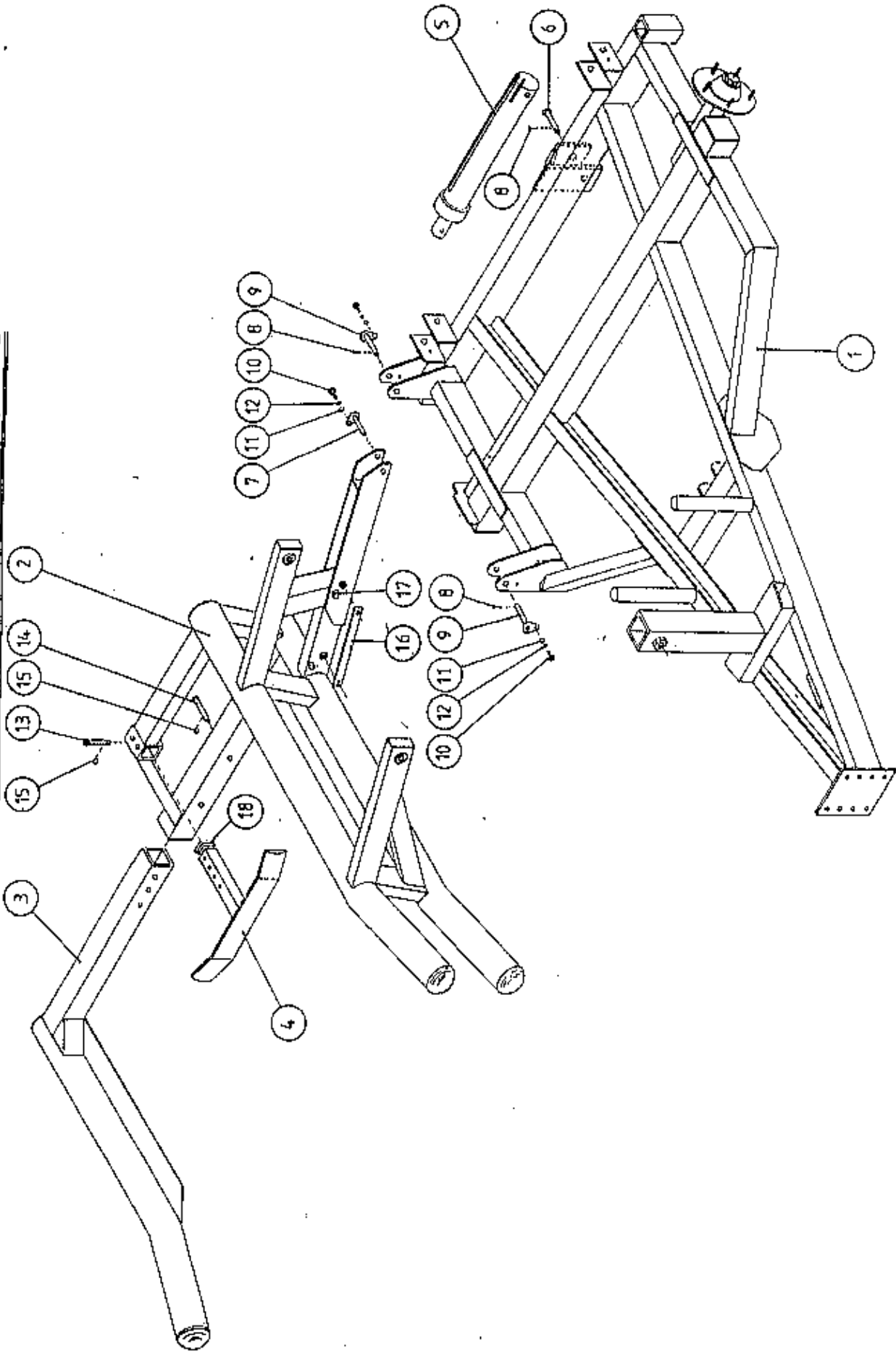
SUPPORT AND END ROLLER ASSEMBLIES

PARTS LIST

<u>ITEM NO.</u>	<u>DESCRIPTION</u>	<u>QTY.</u>	<u>PART NO.</u>
1.	TURNTABLE ASSY.	1	WD65-TA
2.	ROLLER BRACKET SUPPORT	1	WD623-RBS
3.	SUPPORT ROLLER MOUNTING BRACKET	2	WD623-ERM
4.	END ROLLER MOUNTING BRACKET	2	WD623-SRM
5.	END ROLLER SHAFT ASSY.	4	WD623-RSA
6.	SIDE ROLLER	4	Z06-AWR
7.	BEARING 25mm I.D.	8	Z06-433
8.	THRUST WASHER	4	WD60-292
9.	PLASTIC CAP	4	Z06-AWRC
10.	CIRCLIP	4	Z29-75
11.	10mm DIA "D" LINCH PIN	6	Z38-03
12.	SUPPORT ROLLER ASSY.	2	WD623-SRA
13.	OILITE BUSH (1 1/4" O.D. x 1" I.D. x 3/4" L.)	4	Z06-105
15.	50mm WIDE GRIP FACE STRIP	2	WD623-120
16.	M12 HEX HD SET x 60mm LONG	4	Z26-0885
17.	M12 HEX HD SET x 40mm LONG	4	Z26S-084
18.	M12 HEX NUT	4	Z18-12
19.	12mm DIA SPRING WASHER	8	Z12-02-12
20.	12mm DIA FLAT WASHER	8	Z11-02-10

TANCO AUTOWRAP  
1000

LIFT ARM & CHASSIS  
MODEL (TRAILED) 1992



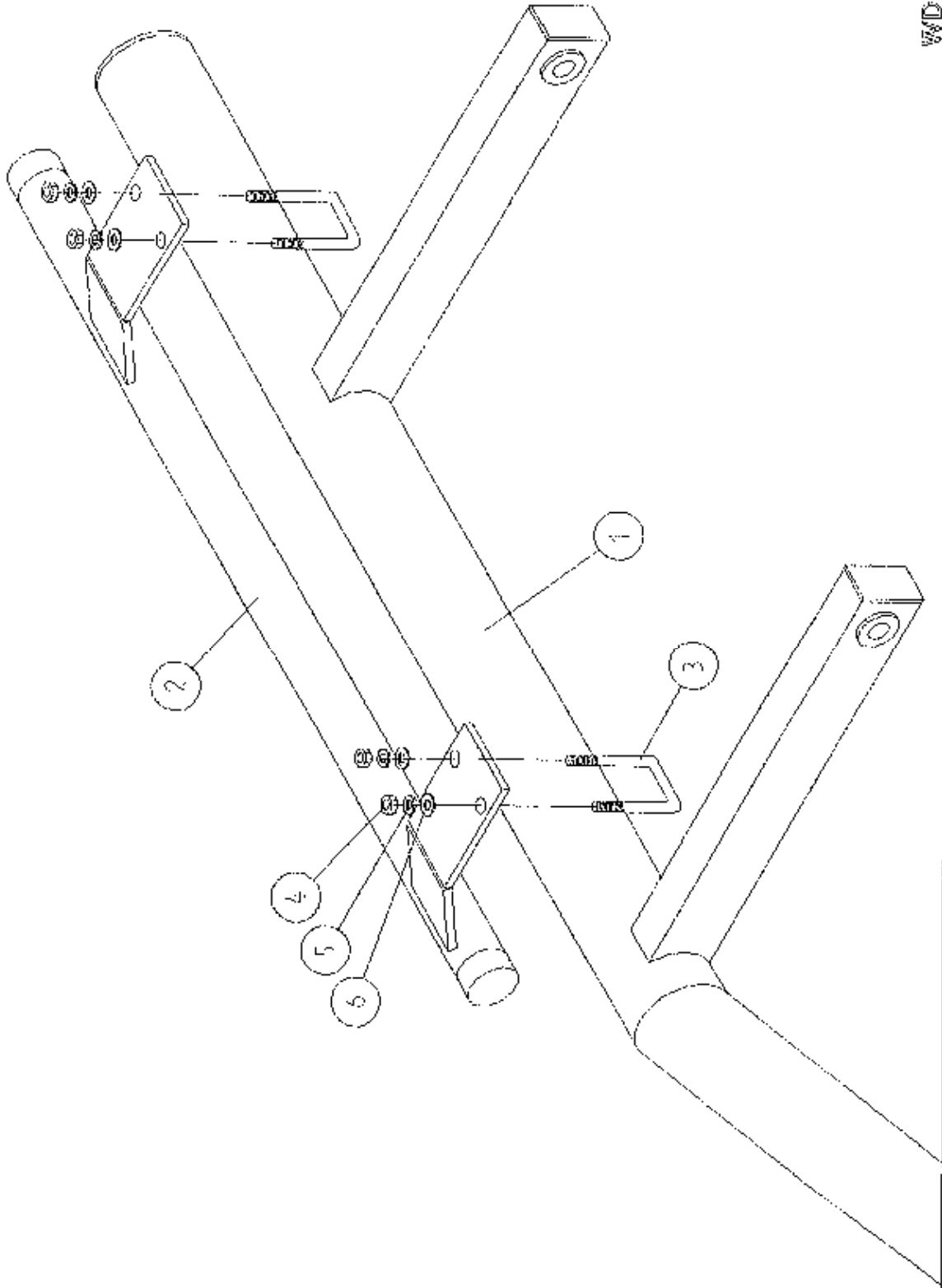
TANCO AUTOWRAP 1000 MODEL (TRAYLED) 1992

PARTS LIST

LIFT ARM AND CHASSIS

<u>ITEM NO.</u>	<u>DESCRIPTION</u>	<u>QTY.</u>	<u>PART NO.</u>
1.	CHASSIS ASSEMBLY	1	WD60-CHIA
2.	LIFT ARM ASSEMBLY	1	WD623-LA
3.	ADJUSTABLE OUTER ARM ASSY.	1	WD623-LAAA
4.	ADJUSTABLE BALE STOP	1	WD60-LABS
5.	HYDRAULIC RAM (LIFT ARM)	1	Z01-01-AW
6.	RAM BOTTOM PIVOT PIN	1	Z03-02-330
7.	RAM TOP PIVOT PIN	1	Z03-01-797
8.	2" x 1/4" SPLIT PINS	3	Z03-21-29
9.	LIFT ARM PIVOT C/W GREASE NIPPLE	2	Z03-01-905
10.	M10 HEX HD SET x 25mm LONG (TUFLOCK)	3	Z268-061
11.	10mm DIA MACHINED FLAT WASHER	3	Z11-02-10
12.	10mm DIA SPRING WASHER	3	Z12-02-10
13.	SPAREX PIN	1	Z03-04-73
14.	SPAREX PIN	1	Z03-04-77
15.	7/16" DIA LINCH PINS	2	Z03-22-06
16.	SAFETY SUPPORT BAR	1	WD60-319
17.	6mm DIA LINCH PIN	2	Z03-22-03
18.	PLASTIC CAP	1	Z32-10

TANCO AUTOWRAP 1000 MODEL  
TOP TUBE EXTENSION FOR LIFT ARM



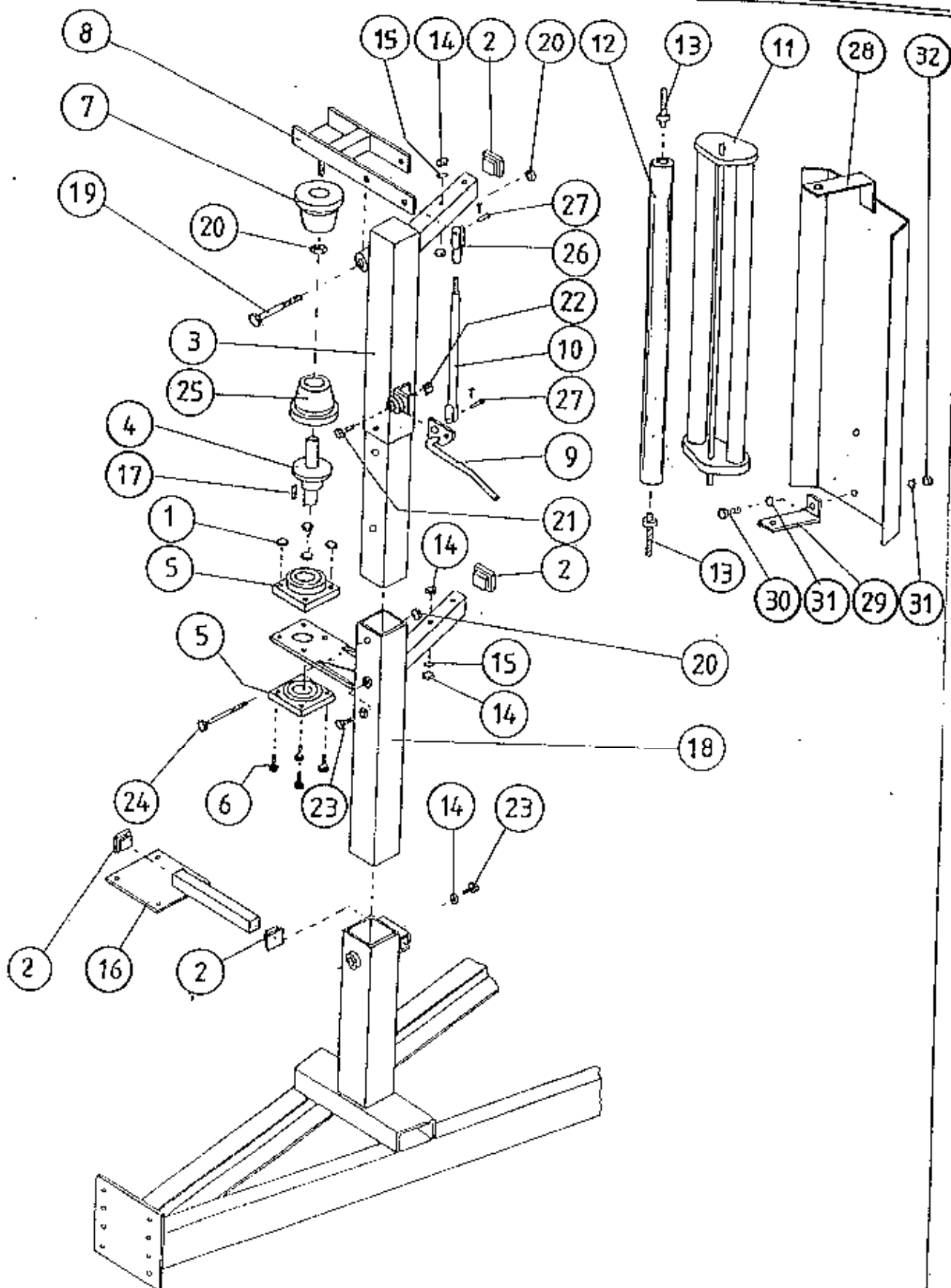
TANCO AUTOWRAP 1000 MODEL

TOP TUBE EXTENSION FOR LIFT ARM

PARTS LIST

<u>ITEM NO.</u>	<u>DESCRIPTION</u>	<u>QTY.</u>	<u>PART NO.</u>
1.	LIFT ARM ASSY	1	WD623-LA
2.	TOP TUBE EXTENSION ASSY	1	WD623-TTE
3.	16mm DIA "U" BOLTS	2	Z35-51
4.	M16 HEX NUTS	4	Z18-16
5.	16mm DIA SPRING WASHER	5	Z12-02-16
6.	16mm DIA FLAT WASHER	4	Z10-02-16

# TANCO AUTOWRAP 1992 FILM DISPENSING SYSTEM



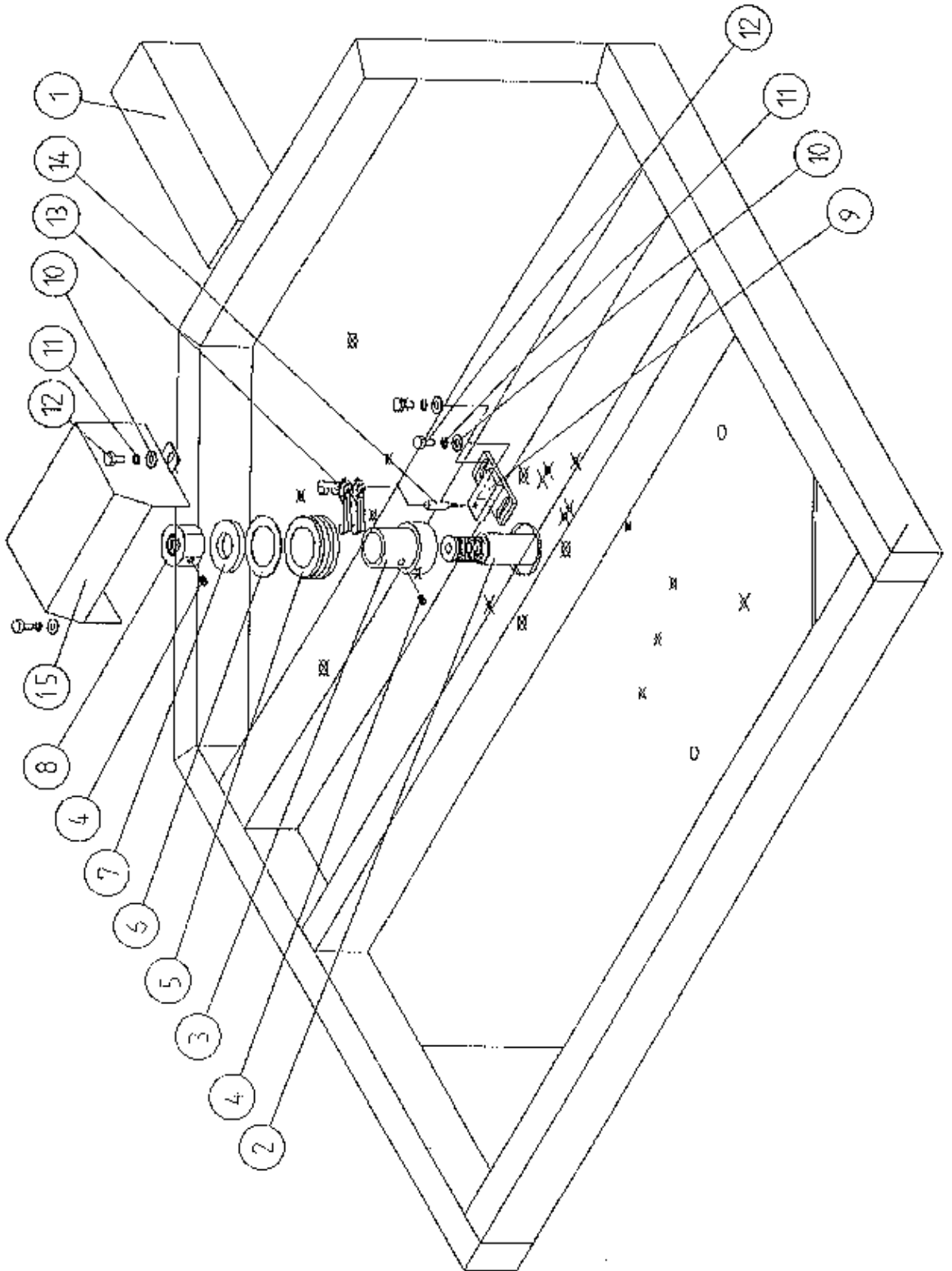
TANCO AUTOWRAP 1992

FILM DISPENSING SYSTEM

PARTS LIST

<u>ITEM NO.</u>	<u>DESCRIPTION</u>	<u>QTY.</u>	<u>PART NO.</u>
1.	M10 LOCKNUTS	4	Z23-10
2.	PLASTIC CAPS (TO SUIT 40 x 40 x 3 RHS)	4	Z32-07
3.	DISPENSER MOUNTING (UPPER)	1	WD60-DMU11
4.	FILM SPOOL ASSEMBLY	1	WD60-SPO
5.	1" DIA FLANGE BEARING	2	Z06-48
6.	M10 HEX HD. BOLT x 50mm LONG	4	Z26-066B
7.	CONE (TOP) 8 C/W BALL BEARINGS	1	Z06-45-01
8.	CLAMP ASSEMBLY	1	WD60-DMCA
9.	LEVER ASSEMBLY	1	WD60-DMLA
10.	LINK ASSEMBLY	1	WD60-DMLK
11.	FILM DISPENSER UNIT MK 8	1	D615
12.	SLAVE ROLLER ASSY (PLASTIC COATED)	1	WD625-SLR
13.	SLAVE ROLLER PIVOT	2	WD60-253
14.	M12 HEX NUTS	6	Z18-12
15.	12mm DIA SPRING WASHER	2	Z12-02-12
16.	SPOOL VALVE MOUNTING PLATE ASSEMBLY	1	WD60-SUMP
17.	1/4" DIA TENSION PIN x 3/4" LONG	1	Z03-20-062
18.	DISPENSER MOUNTING (LOWER)	1	WD60-DMLH
19.	M12 HEX HD BOLT x 130mm LONG	1	Z26-094B
20.	M12 LOCKNUT	3	Z23-12
21.	M8 HEX HD BOLT x 35mm LONG	1	Z26-042S
22.	M8 LOCKNUT	1	Z23-08
23.	M12 HEX HD SET x 30mm LONG	2	Z26-082S
24.	M12 HEX HD BOLT x 100mm LONG	1	Z26-092B
25.	CONE (BOTTOM)	1	Z06-45-02
26.	CLEVIS (M10)	1	Z49-336
27.	PIN (5/16" DIA) C/W CLIP	2	Z49-337

TANCO AUTOWRAP - CUT AND START UNIT (1992)  
SLIP RING ASSEMBLY





TANCO AUTOWRAP CUT AND START UNIT (1992)

SLIP RING ASSY.

PARTS LIST

<u>ITEM NO.</u>	<u>DESCRIPTION</u>	<u>QTY.</u>	<u>PART NO.</u>
1.	UNDERSIDE OF TIPPING FRAME	1	
2.	TURNTABLE SPINDLE	1	WD60-768
3.	SLIP RING MOUNTING SLEEVE	1	WD60-769
4.	M8 GRUB SCREW	2	Z28-006
5.	SLIP RING ASSY.	1	Z0605-308
6.	INSULATING RING	1	Z0605-350
7.	LOCKING COLLAR	1	WD60-715
8.	1 1/4" UNC HEX NUT	1	Z18-300
9.	SLIP RING MOUNTING BRACKET ASSY.	1	WD605-SMB
10.	10mm DIA FLAT WASHER 1" O.D.	4	Z11-02-101
11.	10mm SPRING WASHER	4	Z12-02-10
12.	M10 HEX HD SET x 20mm	4	Z26-060S
13.	BRUSHES	2	Z0605-306
14.	INSULATOR SLEEVE	1	Z0605-304
15.	SLIP RING GUARD ASSY	1	WD605-SRMG

TANCO AUTO WRAP CUT AND START  
SENSOR MOUNTING BRACKET  
MAGNET MOUNTING BRACKET.

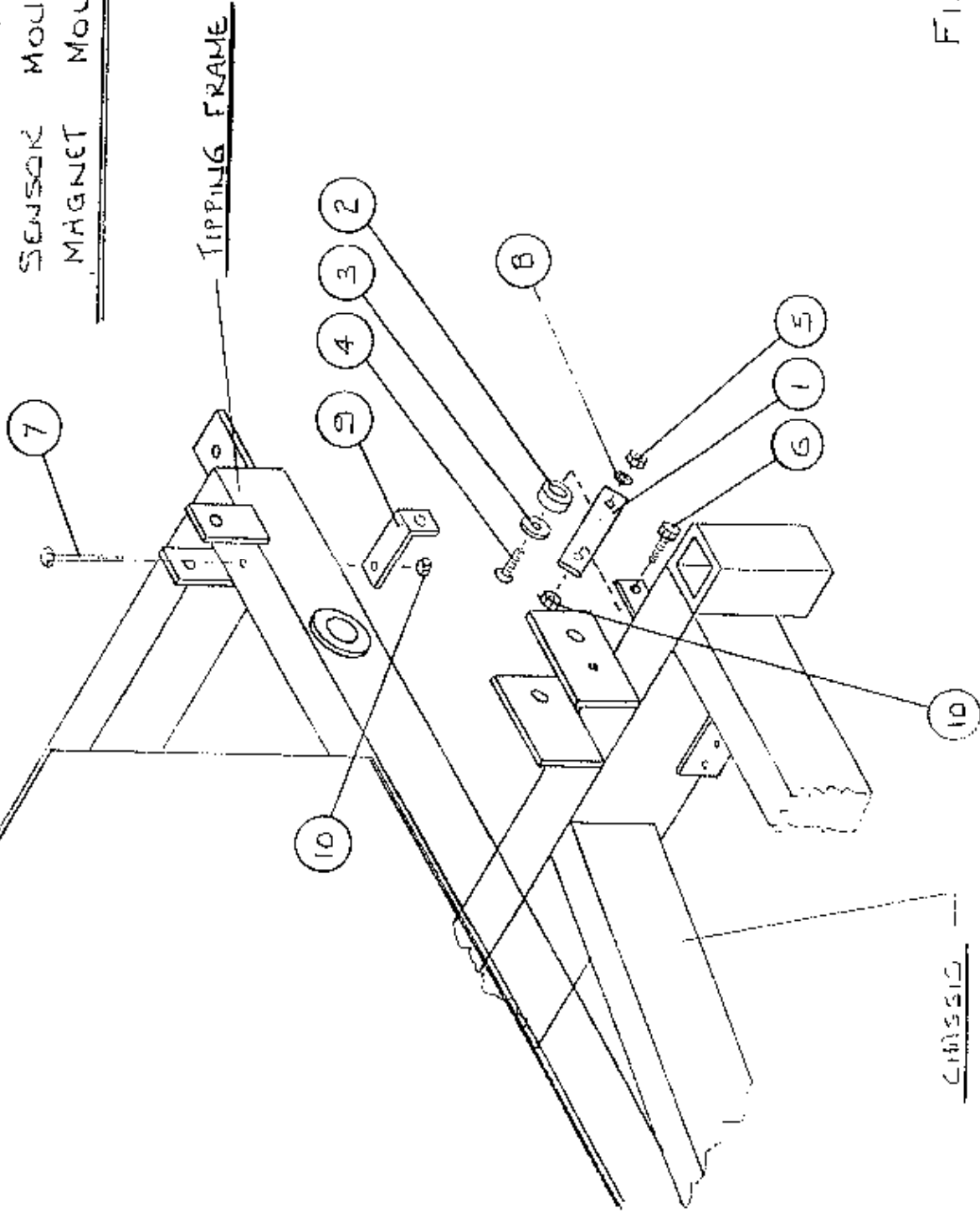


FIG. 6.

TANCO © 1989.

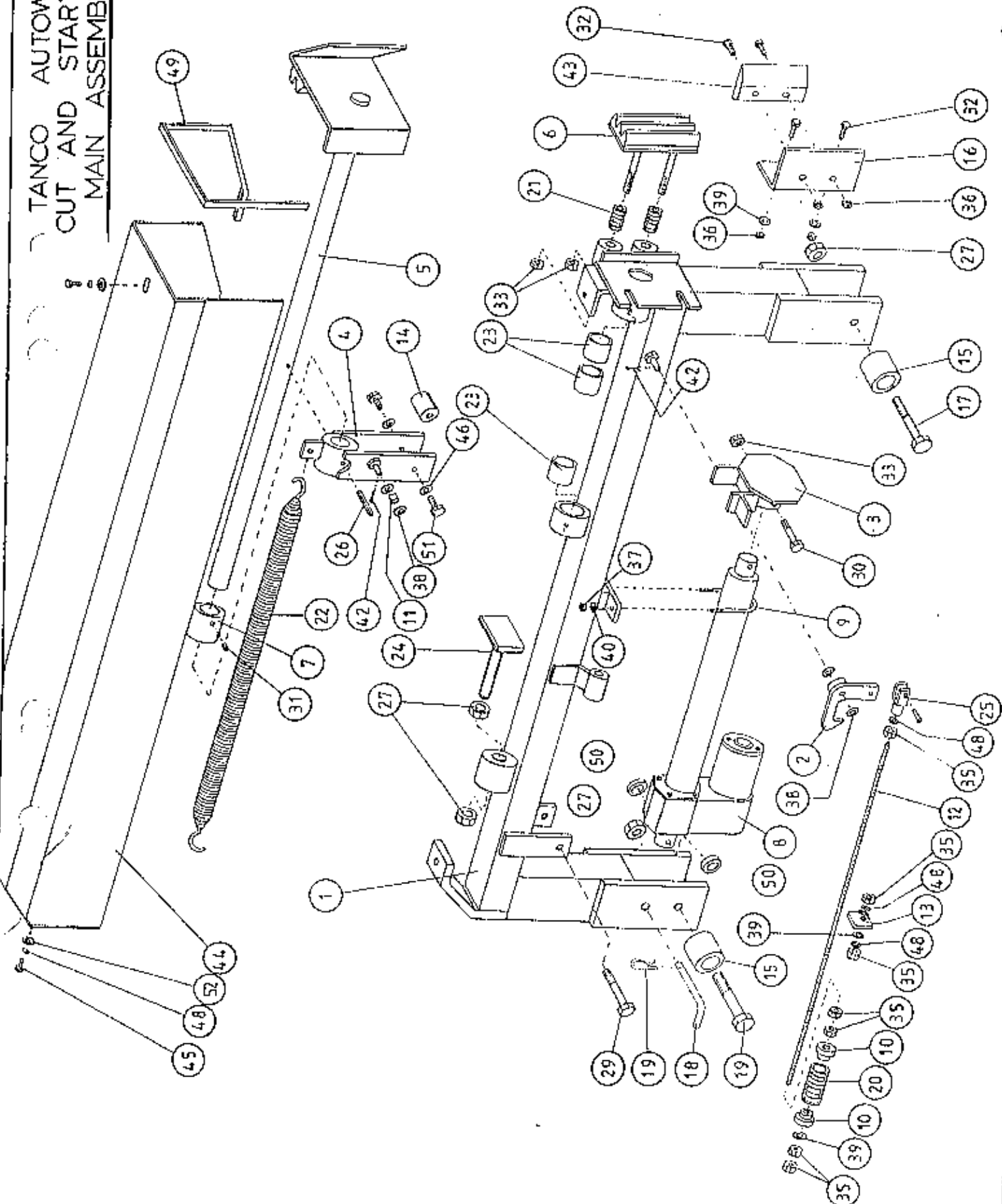
TANCO AUTOWRAP CUT AND START UNIT 1992

SENSOR AND MAGNET MOUNTING BRACKETS

PARTS LIST

<u>ITEM NO.</u>	<u>DESCRIPTION</u>	<u>QTY.</u>	<u>PART NO.</u>
1	MAGNET MOUNTING FLAT	1	WD605-57
2	MAGNET 35mm O.D. x 17mm I.D. x 3mm LONG	1	2D605-200
3	8mm DIA FLAT WASHER 1" O.D.	1	211-02-081
4	M6 CS'K SET SCREW x 25mm	1	213-131
5	M8 LOCKNUT (NYLOCK)	1	223-06
6	M8 HEX HD SET x 20mm	1	226-020S
7	M6 HEX HD BOLT x 100	1	226-057B
8	6mm DIA FLAT WASHER	1	211-02-06
9	SENSOR MOUNTING BRACKET	1	WD605-58
10	M8 LOCKNUT (NYLOCK)	2	223-08

TANCO AUTOWRAP  
 CUT AND START UNIT (1992)  
 MAIN ASSEMBLY

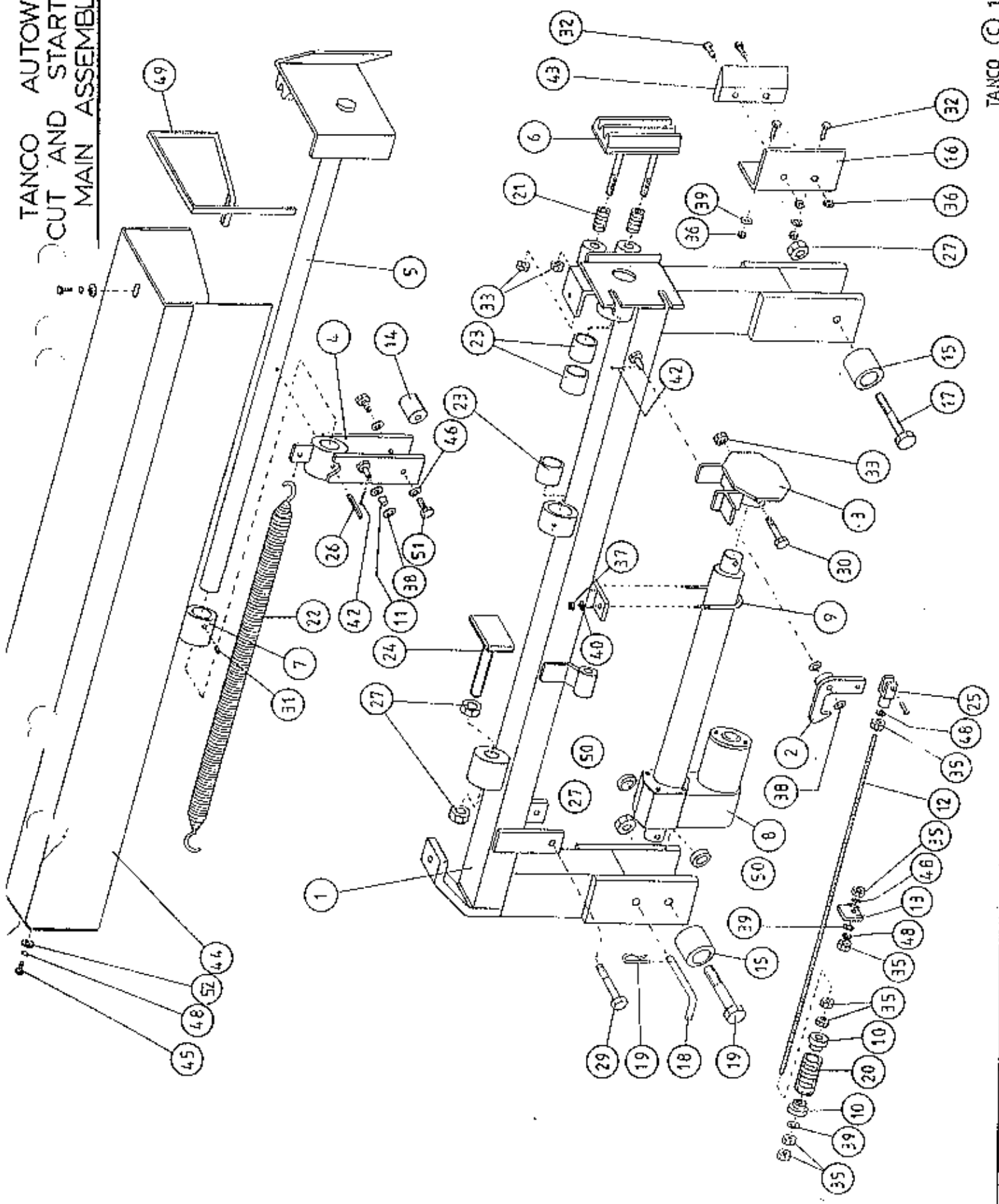


TANCO AUTOWRAP CUT AND START UNIT (1992)

PARTS LIST

<u>ITEM NO.</u>	<u>DESCRIPTION</u>	<u>QTY.</u>	<u>PART NO.</u>
1.	MAIN MOUNTING FRAME ASSY.	1	WD605-MFA
2.	LATCH ASSY.	1	WD605-LA
3.	PUSH PLATE ASSY.	1	WD605-PP
4.	GUIDE ASSY.	1	WD605-GH
5.	PLUNGER ASSY.	1	WD605-PL
6.	FILM GRIPPER ASSY.	1	WD605-FG
7.	PLUNGER END CAP	1	WD605-90
8.	WARNER LINEAR ACTUATOR D11 10B5 08 NO CLUTCH 12V	1	Z0605-500
9.	"U" BOLT	1	WD605-45
10.	STEPPED COLLAR	2	WD605-46
11.	SLEEVE 1/2" DIA O.D. x 13/32" DIA I.D.	1	WD605-47
12.	THREADED ROUND 5/16" UNF	1	WD605-48
13.	TRIGGER	1	WD605-50
14.	COLLAR 1" DIA BRIGHT RD. x 41.5mm LONG	1	WD605-51
15.	SPACER	1	WD605-100
16.	BLADE GUARD/MOUNTING BRACKET	1	WD605-105
17.	M12 HEX HD BOLT x 80mm LONG	2	Z26-0901B
18.	BISSEL PIN	1	Z03-22-AW100
19.	4mm "R" CLIP	1	Z36-02
20.	SPRING 16mm O.D. x 1.5mm WIRE x 48mm LONG	1	Z07-34
21.	SPRING 1.09" O.D. x 0.092" WIRE x 1.54" LONG	2	Z07-44
22.	SPRING 1.125" O.D. x 0.125" WIRE x 330mm	1	Z07-46
23.	OILITE OIL RETAINING BUSH 1 1/8" O.D. x 3/4" I.D. x 1" L.	3	Z06-105
24.	RUBBER BUFFER ASSY.	1	WD605-RBA
25.	CLEVIS C/W PIN	1	Z49-33
26.	1 1/2" x 1/4" DIA TENSION PIN	1	Z03-20-07
27.	M16 HEX NUTS	2	Z18-16
28.	M12 LOCKNUTS	2	Z23-12
29.	M12 HEX HD BOLT x 65mm	1	Z26-0882B
30.	M12 HEX HD BOLT x 50mm	1	Z26-086B
31.	M8 GRUB SCREW	1	
32.	M8 HEX HD SET x 25mm	4	Z26-025S
33.	M12 BINX LOCKNUT	4	Z23-12BX

TANCO AUTOWRAP  
CUT AND START UNIT (1992)  
MAIN ASSEMBLY

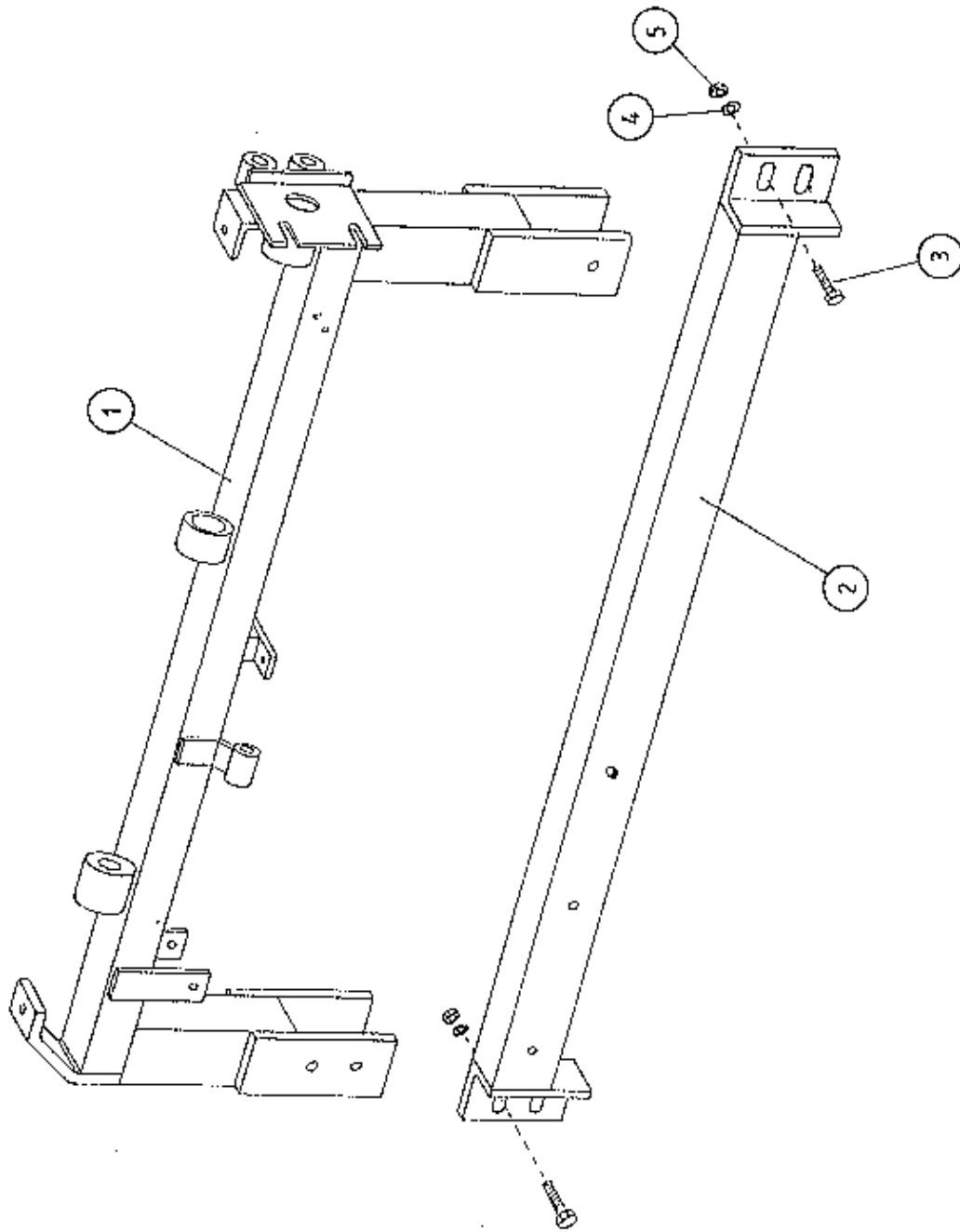


TANCO AUTOWRAP CUT AND START UNIT (1992)

PARTS LIST

<u>ITEM NO.</u>	<u>DESCRIPTION</u>	<u>QTY.</u>	<u>PART NO.</u>
35.	5/16" UNF HEX NUT	7	Z15-05
36.	M8 LOCKNUT	6	Z18-08
37.	M6 LOCKNUT (NYLOCK)	2	Z23-16
38.	10mm DIA FLAT WASHER	10	Z11-02-10
39.	8mm DIA FLAT WASHER	5	Z11-02-08
40.	6mm DIA FLAT WASHER	2	Z11-02-06
42.	3mm DIA SPLIT PIN	2	Z03-21-02
43.	BLADE	1	Z44-34
44.	MAIN GUARD	1	WD605-MG
45.	M8 HEX HD SET x 20mm LONG	2	Z26-020S
46.	10mm DIA SPRING WASHER	2	Z12-02-10
47.			
48.	8mm DIA SPRING WASHER	9	Z12-02-08
49.	EDGING STRIP	1	Z44-12
50.	SPACER 1" O.D. x 1/2" I.D. x 6mm LONG	2	WD605-65
51.	M10 HEX HD SET x 20mm	2	Z26-060S
52.	8mm DIA FLAT WASHER 1" O.D.	4	Z11-02-081

UNCO AUTOWRAP CUT AND PORT (92)  
MOUNTING FRAME





TANCO AUTOWRAP CUT AND START UNIT

MOUNTING FRAME

PARTS LIST

<u>ITEM NO.</u>	<u>DESCRIPTION</u>	<u>QTY.</u>	<u>PART NO.</u>
1.	MAIN MOUNTING FRAME ASSY.	1	WD605-MFA
2.	MAIN FRAME MOUNTING	1	WD605-MFM
3.	M10 HEX HD SET x 30mm LONG	2	Z26-062S
4.	10mm DIA SPRING WASHER	2	Z12-02-10
5.	M10 HEX NUT	2	Z18-10

# TANCO AUTOWRAP CUT AND START ELECTRICAL CIRCUIT

